

KITCHEN APPLIANCES



Fisher & Paykel

Behind every product is a story and that story starts with you. Your kitchen is an expression of who you are and how you enjoy food with others. Our passion is creating better experiences that put the joy of food at the center of your life. Eat, share, live life — we'll take care of the details.



We have been designing products since 1934 and have grown into a global company operating in 50 countries and manufacturing in the USA, Mexico, Italy, Thailand and New Zealand. Our design heritage is founded on a pioneering spirit and a culture of curiosity that has challenged conventional appliance design to consistently deliver products tailored to human needs. For us, legacy is about looking to the future while ensuring what we develop today is aligned to the fundamental principles of sustainable design. We are committed to ongoing research and development. Our culture is one of open innovation, which allows people to work collaboratively to find insights and ideas that connect with our customers and respect our planet.



Your kitchen is more than just a room; it is the heart and soul of your home. It's a space where you can share delight; fulfill a passion and taste the best life has to offer. Creating a feast for family and friends is one of life's simple pleasures. From our perspective, food needs to be more than just fuel, it needs to be delicious as well. Each of our products has been designed to bring out the chef in you, by making cooking easier, more enjoyable. This is what drives us to do what we do — creating experiences that enhance the time we spend together.



We understand that our lives are becoming more complex. We believe in technology that is both leading edge and at the same time human. This approach has led to the development of refrigerators that think for themselves to keep food fresher, and ovens so smart they help clean themselves. Whether it's gas cooktops that are easy to clean or a dishwasher in a drawer — above all we believe in insight led design that is tailored to people's changing needs around the world.



Food is theatre. From mid week convenience to gourmet weekends, each meal is a performance and the kitchen is your stage. Celebrating great food and cooking from around the world is the show. From the soft crust of a freshly baked baguette to the comforting fragrance of a slow-cooked winter casserole — variety is the spice of life. Just as we seek quality and variety in our food, we desire the same of our kitchens. We are looking for unique appliances that combine innovation with reliability and performance. Savor the taste of your next meal in tomorrow's kitchen.

**Fisher & Paykel
Our Kitchen Blog**

Fisher & Paykel is excited to bring you Our Kitchen, a food blog produced by a group of friends at Fisher & Paykel who share a passion for all things food and cooking. Through delicious recipes and beautiful photography the blog imparts knowledge and advice, inspiring readers in their culinary endeavours. With varying experiences and backgrounds in cooking, every member of the Our Kitchen team brings to the table their own unique perspective on food. As a result we present a collection of recipes which appeal to inspiring foodies of all skills and interests.

Visit www.ourkitchen.fisherpaykel.com for more recipes and cooking ideas.

Cranberry and Apple Cider Pork Belly

**1 Ingredients
(serves 8-10)**

For the Cranberry & Apple Sauce:

- 1 cup fresh cranberries
- 2 apples, peeled and diced
- ½ cup cranberry juice
- ½ cup orange juice
- ½ cup brown sugar (add more for a sweeter tooth)
- 2 tsp orange zest

For the Cranberry Glaze:

- 3 cups of cider
- 1 cup fresh cranberries
- 2 cloves garlic, diced
- 1 tsp cinnamon
- 1 fresh chili, diced
- ½ cup brown sugar
- ½ cup apple cider vinegar
- Pinch of salt

For the Pork Belly:

- 1 large pork belly
 - 3 sprigs of fresh rosemary
 - 2 tbsp olive oil
 - Rock Salt
 - 4 cloves garlic, diced
 - 1-2 cups apple or pear cider
-

2 Method

For the Cranberry & Apple Sauce:

1. Peel and dice the apples and place in a saucepan with the cranberries.
2. Add the orange zest and brown sugar and stir.
3. Add the cranberry and orange juice and bring to the boil, making sure you stir regularly.
4. Reduce the heat and simmer for 20 minutes or until the cranberries burst and apples soften.

For the Cranberry Glaze:

1. Place all ingredients into a saucepan and bring to the boil.
2. Reduce the heat and simmer for 40 minutes or until the mixture begins to thicken, whisk the mixture occasionally.
3. Remove the glaze from the heat and strain through a sieve to remove the cranberry skins.
4. Refrigerate until required.

Pork Belly:

1. Pre-heat oven to 285 °F on Bake.
 2. Score the skin of the pork belly in diagonal lines about ⅜ inch apart. Avoid cutting down into the meat.
 3. Generously rub salt right into all the scores, then rub the diced garlic and oil across the top.
 4. Place rosemary into the bottom of a roasting dish and place the pork belly on top, skin side up.
 5. Pour cider around the pork until it covers the meat but not the fat.
 6. Place the pork in the oven.
 7. Cook the pork for 5-6 hours. After 1-2 hours of cooking, add more cider around the pork as it evaporates to help keep it moist.
 8. After 5-6 hours of cooking, take the pork out of the oven and spread the glaze across the top of the pork.
 9. Return the pork to the oven and grill on high for 20-30 minutes or until the skin starts to bubble.
 10. Remove from the oven and let it sit for a few minutes before serving.
-







19:30



COOK

Whether your preference in cooktops is gas or electric, all our cooktops offer precise, consistent, state-of-the-art control. Our built-in ovens and ranges are designed with a full offering of cooking requirements and temperatures, giving you greater flexibility. The most demanding and creative cook can enjoy cooking like a chef and will be thrilled with the flexibility and control of their new Fisher & Paykel cooking appliance.

30" Large Capacity Built-in Ovens

Fisher & Paykel large capacity ovens are visually impressive at 30" wide, they deliver outstanding performance and have innovative features that make it easy to cook for a crowd, be it family or friends.

1 Innovative

The latest in microprocessor control means you can count on this oven to reach the specified temperature quickly, and maintain it.

2 Convenient

The 10 cooking modes in both cavities can confidently cook any recipe or dish, with a special roast mode to sear the outside meat then slowly cook to the middle.

3 Ergonomic

Sliding telescopic oven shelves slide in and out effortlessly, while eight shelf positions give you a vast range of options for organizing the interior of the oven.

4 Intuitive

Illuminated halos surround the temperature and function knobs giving great visual feedback.

5 Responsive

Heats to 350°F in less than ten minutes, and to 425°F in fifteen. The super powerful 4400W broil locks in flavor and nutrients fast.

6 Precise

The AeroTech™ convection system guarantees consistent temperature throughout the oven.

7 Efficient

At 4 cu.ft, this oven is big enough to cook a turkey on one shelf with room for a large pan of roast vegetables on another.

8 Safe

Features cool touch doors that are made of 4 panes of glazed glass and its own cooling system to ensure externally it's safe to touch.





FUNCTION

TEMPERATURE

FUNCTION

TEMPERATURE

100

350

ZERO
BAKE

350

Whirlpool

Fisher & Paykel





Ranges

Fisher & Paykel ranges give you the flexibility to prepare several courses simultaneously. Available in Dual Fuel, Electric and Gas options. With clean lines in glass and stainless steel it will complement the style and elegance of any kitchen.

-
- 1 Innovative**
Professional performance, offering up to six cooking modes from fan broil to traditional bake (selected models only) – perfect for any culinary requirements.
 - 2 Convenient**
The door and its inner pane of glass can be removed for easy, hassle-free cleaning and the storage drawer minimizes clutter for all oven accessories.
 - 3 Ergonomic**
Streamlined trivets let you slide pots and pans without lifting them.
 - 4 Precise**
Clear, easy-to-use dials give you exceptional control over cooking temperatures.
 - 5 Efficient**
A powerful broil gives you a fast and even result, locking in all the flavours and nutrients.
-

CookSurface

A revolution in cooking. Combining the superior performance of gas cooking and the convenience of a ceramic glass surface with retractable burners and pan supports.

1 Easy Clean

Sheer ceramic glass surface allows for easy cleaning after cooking — wipe and walk away.

2 Space Saver

Frameless gas cooktop with electronic control. World's first Independently operated gas Aero™ burners and pan supports that retract virtually flush into the ceramic glass surface when not in use.

3 Ergonomic

Easily accessible and ergonomically designed three-in-a-row configuration.

4 Intuitive

Dial control with audio and visual feedback for precise linear flame control.

5 Responsive

Quiet glow ignition means quick flame with no spark and no struggling to ignite.

6 Precision

Uniquely designed burners ensure even heat distribution with a powerful, high setting and low turndown.

7 Efficient

Aero™ burners mix fan-forced air at lower settings to reduce peak temperatures for effective simmering.

8 Safety

Features a key lock as a safety precaution.







Fisher & Paykel



Gas Cooktops

For chefs who prefer the conventional method of cooking, Fisher & Paykel have a range of smart features that make cooking with gas easier, quicker and more convenient than ever before.

-
- 1 Innovative**
Our unique Innovalve™ technology allows you to adjust the flame with unprecedented 180 degree gas valve rotation for precise temperature control (CG365D only).

 - 2 Convenient**
Fisher & Paykel gas cooktops feature a wide range of burner sizes and power for everything from a slow simmer to an intense heat for steaks and stir-fries.

 - 3 Responsive**
Indicator lights show which burners are in use and alert you if the gas shuts down (CG365D only).

 - 4 Efficient**
Durable heavy-duty cast iron trivets, hard wearing for a long life.

 - 5 Safe**
If the flame is accidentally extinguished, the gas automatically turns off.

 - 6 Reliable**
All Fisher & Paykel gas cooktops feature electronic ignition. It is quick, reliable and safe.
-

Electric Cooktops

Our electric cooktop has a number of built-in features that make cooking easier while giving you greater control.

-
- 1 Innovative**
With five element sizes for cooking flexibility, including SuperSimmer which offers you extremely low temperatures ideal for melting chocolate and delicate sauces.
 - 2 Convenient**
Flat ceramic surfaces for easy cleaning.
 - 3 Ergonomic**
The ceramic surface is perfectly flat so the surface can be used as an extension of your preparation area.
 - 4 Intuitive**
Easy to use & read cylindrical knob controls, with two of the five elements offering dual sizes giving you a choice of up to seven different cooking zones.
 - 5 Responsive**
This cooktop has exceptionally fast heating elements which provide precise temperature control from a rapid boil to an extremely low simmer.
 - 6 Safe**
After use, hot surface indicators glow until the surface is safe to touch.
 - 7 Eco friendly**
We use ceramic glass in the production of our electric cooktops. Our glass is eco-friendly, not using any arsenic or heavy metals in the manufacturing process.
-







30" Double Large Capacity Built-in Oven

OB30DDEPX1
Stainless Steel
Designer handle

Dimensions: H 48 7/16" x W 29 3/4" x D 23 15/16"

Total capacity: 4 + 4 cu.ft **Shelf positions:** 8 per cavity

10 Cooking modes + self clean per cavity Aero™ Bake, Aero™ Broil, Aero™ Pastry, Bake, Broil, Maxi Broil, Pastry Bake, Roast, TrueAero™, Warm, Self Clean

Performance: 4,400W Broil, AeroTech™ convection cooking system

Cleaning: Self clean, High acid resistant graphite enamel interior, Removable shelf runners, Removable oven doors

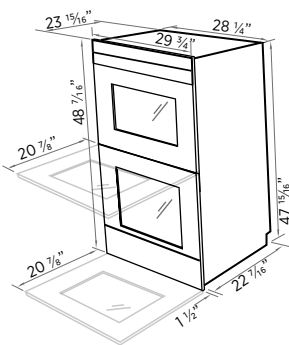
Safety: Cool touch quadruple glazed door, Door and cavity cooling system, Non-tip shelves, Control panel key lock, Catalytic venting system

Controls: Electronic clock, Automatic cooking, Minute timer, 3 Halogen lights (2 x side and rear), Electronic temperature control, Illuminated halo dials, Sabbath mode

Power requirements: 120 / 240 V, 60 Hz, 38.3 amp circuit

Accessories: 5 Telescopic sliding shelves, 2 Three piece anti-splatter broil system, 1 Cooking probe

Overall depth of product excludes handle and knobs.



30" Single Large Capacity Built-in Oven

OB30SDEPX1
Stainless Steel
Designer handle

Dimensions: H 27 1/16" x W 29 3/4" x D 23 15/16"

Total capacity: 4 cu.ft **Shelf positions:** 8

10 Cooking modes + self clean: Aero™ Broil, Aero™ Broil, Aero™ Pastry, Bake, Broil, Maxi Broil, Pastry Bake, Roast, TrueAero™, Warm, Self Clean

Performance: 4,400W Broil, AeroTech™ convection cooking system

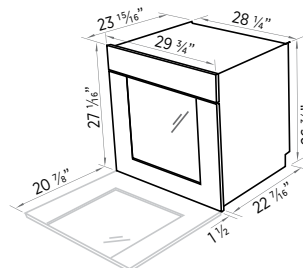
Cleaning: Self clean, High acid resistant graphite enamel interior, Removable shelf runners, Removable oven door

Safety: Cool touch quadruple glazed door, Door and cavity cooling system, Non-tip shelves, Control panel key lock, Catalytic venting system

Controls: Electronic clock, Automatic cooking, Minute timer, 3 Halogen lights (2 x side and rear), Electronic temperature control, Illuminated halo dials, Sabbath mode

Power requirements: 120 / 240 V, 60 Hz, 19.4 amp circuit

Accessories: 3 Telescopic sliding shelves, 1 Three piece anti-splatter broil system, 1 Cooking probe



Note: If installing a cooktop above the oven, ensure adequate clearance is provided for the cooktop as per the cooktop manufacturer's instructions. Overall depth of product excludes handle and knobs.



24" Single Built In Oven

OB24SDPX1
Stainless Steel
Designer handle

Dimensions: H 24" x W 24" x D 23"

Total capacity: 2 cu.ft **Shelf positions:** 4

6 Cooking modes + self clean: Convection Broil, Broil, Convection Double Broil, Bake, Convection Bake, Defrost, Self Clean

Performance: 3,000W Broil, Convection cooking

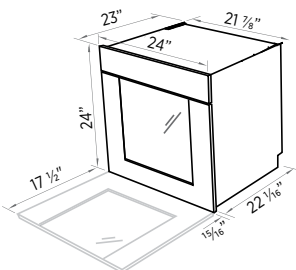
Cleaning: Self clean, High acid resistant graphite enamel interior, Removable shelf runners, Removable oven door

Safety: Cool touch 5 pane glazed door, Fan cooling system

Controls: Electronic clock, Automatic cooking, Minute timer

Power requirements: 120 / 240 V, 60 Hz, 12.9 amp circuit

Accessories: 1 Broiling pan, 1 Broiling rack, 1 Oven Shelf, 1 Oven to table glass baking tray, 1 Step down shelf



Note: If installing a cooktop above the oven, ensure adequate clearance is provided for the cooktop as per the cooktop manufacturer's instructions.
Overall depth of product excludes handle and knobs.
All height measurements include mounted feet.



30" Warming Drawer

OD30WDX1
Stainless Steel
Designer handle

Dimensions: H 10 1/2" x W 29 1/16" x D 25 1/16"

Total capacity: 1.6 cu.ft

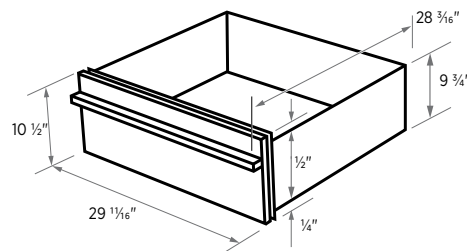
Performance: Proof 90 - 110 F, Low 140 - 170F, Medium 170 - 200F, High 200 - 250F

Power Output: 500W

Temperature Range: 90 - 250F

Number of Standard Size Plates: 6

Power Requirements: 120 V, 60 Hz, 5 min. 15 max. amp circuit





48" Dual Fuel Range

OR48DDPWGX1
Stainless Steel
Designer handle

Dimensions: H 36 1/4" – max. 36 1/2" x W 47 7/8" x D 23 1/16" (excl. handle)
Backguard: H 8"

Total capacity: 2 + 2 cu.ft **Shelf positions:** 4 + 4

6 Cooking modes + Self clean per cavity + 2 Warming drawers:
Convection with ventilation (Fan forced), Broil, Ventilated Broil (Fan broil), Ventilated Double Broil, Bake, Defrost

Performance: 3,000W Broil, 2,800W Bake, 2,200W Convection Bake, 500W Warming drawer

Gas cooktop: 6 Gas burners including a 16,000BTU Wok burner, Electronic ignition, Natural Gas fitted/LPG compatible, Cast iron trivets

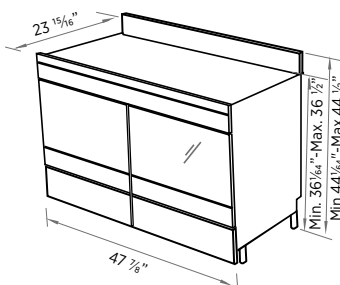
Cleaning: Gray enamel interior, Removable oven doors

Safety: Cool touch 5 pane door, Door and cavity cooling system, Non-tip shelves, Anti-tilt bracket, Flame failure device

Controls: Electronic clock, Automatic and semi-automatic cooking, Minute timer

Power requirements: 120 / 240 V, 60 Hz, 30.3 max amp circuit

Accessories: 2 Broiling pans, 2 Broiling racks, 4 Step down oven shelves, Wok stand, 2 Warmer shelves, LPG Gas conversion kit



Overall height includes mounted feet and splashback. Measured to top of cooktop. Overall depth excludes handle and knobs.



36" Gas Range

OR36SDBGX1
Stainless Steel
Designer handle

Dimensions: H 35 7/16" – 37 13/32" x W 35 7/8" x D 23 3/32" (excl. handle)
Backguard: H 8"

Total capacity: 4 cu.ft **Shelf positions:** 3

4 Cooking modes: Bake, Broil, Convection Bake, Defrost

Performance: 15,000BTU Broil, 21,000BTU Bake

Gas cooktop: 5 Gas burners including 16,000BTU Wok burner, Electronic ignition, Natural Gas fitted/LPG compatible, Cast iron trivets

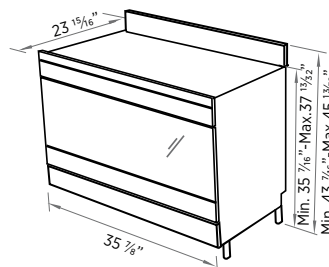
Cleaning: Gray enamel interior, Removable oven door, Removable inner door glass

Safety: Cool touch double glazed door, Door and cavity cooling system, Non-tip shelves, Anti-tilt bracket, Flame failure device, Cooling fan warning light

Controls: 3 Button electronic clock, Semi-automatic cooking, Minute timer

Power requirements: 120 V, 60 Hz, 0.575 max amp circuit

Accessories: 1 Broiling pan, 1 Broiling rack, 2 Step down oven shelves, Wok Stand, LPG Gas conversion kit, Storage compartment



Overall height includes mounted feet and splashback. Measured to top of cooktop. Overall depth excludes handle and knobs.



36" Gas Range

OR36LDBGX1
Stainless Steel
Designer Handle

Dimensions: H 35 $\frac{7}{16}$ " – 37 $\frac{13}{32}$ " x W 35 $\frac{7}{8}$ " x D 23 $\frac{31}{32}$ " (excl. handle)
Backguard: H 8"

Total capacity: 2.4 + 1.5 cu.ft **Shelf positions:** 3 + 3

4 Cooking modes per cavity: Bake, Broil, Convection Bake, Defrost

Performance: 15,000BTU Broil, 21,000BTU Bake

Gas Cooktop: 5 Gas burners including 16,000BTU Wok burner, Electronic ignition, Natural Gas fitted/LPG compatible, Cast iron trivets

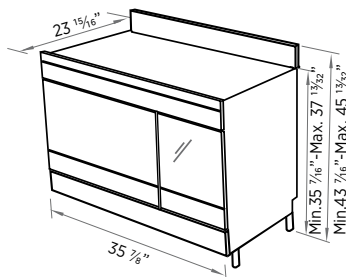
Cleaning: Gray enamel interior, Drop down broil element, Removable oven doors

Safety: Cool touch double glazed doors, Door and cavity cooling system, Non-tip shelves, Anti-tilt bracket, Flame failure device, Cooling fan warning light

Controls: Knob control, Electronic clock, Semi-automatic cooking, Minute timer, Oven light

Power Requirements: 120 V, 60 Hz, 0.96 max amp circuit

Accessories: 2 Broiling pans, 2 Broiling racks, 2 Step down oven shelves (main oven), 2 Shelves ($\frac{1}{2}$ oven), 1 Glass tray, Storage compartment, LPG gas conversion kit, Wok stand



Overall height includes mounted feet and splashback.
Measured to top of cooktop.
Overall depth excludes handle and knobs.



24" Gas Range

OR24SDMBGX1
Stainless Steel
Designer Handle

Dimensions: H 35 $\frac{7}{16}$ " – 36 $\frac{7}{32}$ " x W 23 $\frac{7}{8}$ " x D 24 $\frac{5}{64}$ " (excl. handle)
Backguard: H 5"

Total capacity: 2.5 cu.ft **Shelf positions:** 3

4 Cooking modes: Bake, Broil, Convection Bake, Defrost

Performance: 8,500BTU Broil, 13,000BTU Bake

Gas Cooktop: 4 Gas burners including 12,000BTU Wok burner, Electronic ignition, Natural Gas fitted/LPG compatible, Cast iron trivets

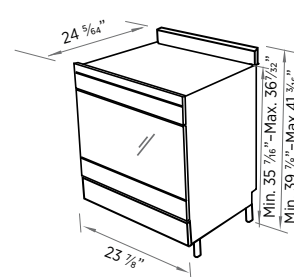
Cleaning: Gray enamel interior, Removable oven door, Removable inner door glass

Safety: Cool touch double glazed door, Door and oven cavity cooling system, Non-tip shelves, Anti-tilt bracket, Flame failure device, Cooling fan warning light

Controls: 3 Button electronic clock, Semi-automatic cooking, Minute timer

Power Requirements: 120 V, 60 Hz, 0.1 amp circuit

Accessories: 1 Broiling pan, 1 Broiling rack, 2 Step down oven shelves, Storage compartment, Wok Stand



Overall height includes mounted feet and splashback.
Measured to top of cooktop.
Overall depth excludes handle and knobs.



24" Dual Fuel Range

OR24SDPWGX1
Stainless Steel
Designer Handle

Dimensions: H 35 17/32" – 36 7/32" x W 23 7/8" x D 24 11/64" (excl. handle)
Backguard: H 5"

Total capacity: 2 cu.ft **Shelf positions:** 4

6 Cooking modes + Self clean + Warming drawer: Convection with ventilation (Fan forced), Broil, Ventilated Broil (Fan broil), Ventilated Double Broil, Bake, Defrost

Performance: 3,000W Broil, 2,800W Bake, 2,200W Convection Bake, 500W Warming drawer

Gas Cooktop: 4 Gas burners including 12,000BTU Wok burner, Electronic ignition, Natural Gas fitted/LPG compatible, Cast iron trivets

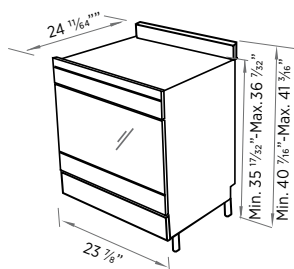
Cleaning: Gray enamel interior, Removable oven door, Pyrolytic self clean cycle

Safety: Cool touch 5 pane glass door, Door and cavity cooling system, Non-tip shelves, Anti-tilt bracket, Flame failure device

Controls: 6 Button electronic clock, Automatic and semi-automatic cooking, Minute timer

Power Requirements: 120/240 V, 60Hz, 15.2 amp circuit

Accessories: 1 Broiling pan, 1 Broiling rack, 2 Step down oven shelves, 1 Warming drawer shelf, Wok Stand



Overall height includes mounted feet and splashback. Measured to top of cooktop. Overall depth excludes handle and knobs.



24" Electric Range

OR24SDPWSX1
Stainless Steel
Designer Handle

Dimensions: H 35 17/32" – 36 7/32" x W 23 7/8" x D 24 11/64" (excl. handle)
Backguard: H 5"

Total capacity: 2 cu.ft **Shelf positions:** 4

6 Cooking modes + Self clean + Warming drawer: Convection with ventilation (Fan forced), Broil, Ventilated Broil (Fan broil), Ventilated Double Broil, Bake, Defrost

Performance: 3,000W Broil, 2,800W Bake, 2,200W Convection Bake, 500W Warming drawer

Electric Cooktop: Ceramic glass, 4 Cooking zones including a 2,100W double cooking zone

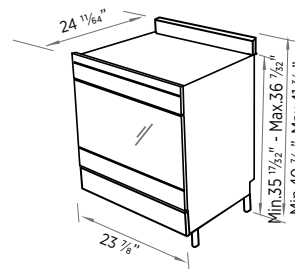
Cleaning: Gray enamel interior, Removable oven door

Safety: Cool touch 5 pane door, Door and cavity cooling system, Non-tip shelves, Anti-tilt bracket, Flame failure device

Controls: Electronic clock, Automatic and semi-automatic cooking, Minute timer

Power Requirements: 120/240 V, 60Hz, 39.9 max amp circuit

Accessories: 1 Broiling pan, 1 Broiling rack, 2 Step down oven shelves, 1 Warming drawer shelf



Overall height includes mounted feet and splashback. Measured to top of cooktop. Overall depth excludes handle and knobs.



24" Traditional Microwave
MO-24SS-2
Stainless Steel

Dimensions: H 13 ³/₈" x W 23 ¹⁵/₁₆" x D 19 ¹/₄"

Total capacity: 2.0 cu.ft

Microwave: Sealed Easy Clean Interior Surface, 16" Carousel Turntable System

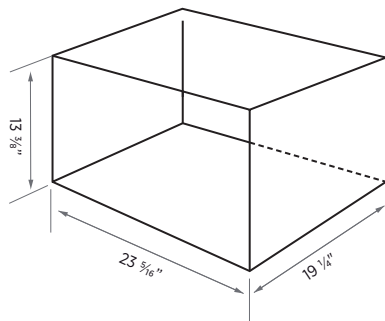
Display: Easy to Use, 16 digit, 2 color display

Cooking programs: 13 Sensor Cook Settings plus Reheat, Popcorn + 8 Defrost, Keep Warm Plus

Performance: Microwave 1,200W

Power requirements: 120 V, 60 Hz, 3 wire, 15 amp circuit

Matching trim kit: MOTTK-FP (refer to pg. 37)



24" Convection Microwave
CMO-24SS-2
Stainless Steel

Dimensions: H 14 ⁷/₈" x W 24 ⁵/₈" x D 19"

Total capacity: 1.5 cu.ft

Microwave: Sealed Easy Clean Interior Surface, 15 ³/₈" Carousel Turntable System, 2 baking racks included

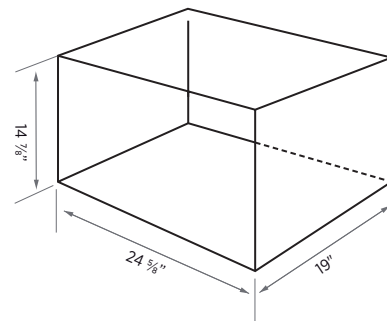
Display: Easy to read, 7 digit, 2 color display

Cooking programs: Convection programs: 12 Compu Cook, Compu Defrost plus 10 Sensor Cook Settings plus Reheat, Popcorn

Performance: Microwave 900W, Convection Element 1,450W

Power requirements: 120 V, 60 Hz, 3 wire, 15 amp circuit

Matching trim kit: CMOTTK-FP (refer to pg. 37)





30" Over the Range Microwave

CMOH-30SS
Stainless Steel

Dimensions: H 16 $\frac{1}{32}$ " x W 29 $\frac{15}{16}$ " x D 15 $\frac{9}{32}$ "

Total capacity: 1.1 cu.ft

Microwave: Sealed Easy Clean Interior Surface, On/Off 13" Carousel, Turntable System, 2 baking racks included

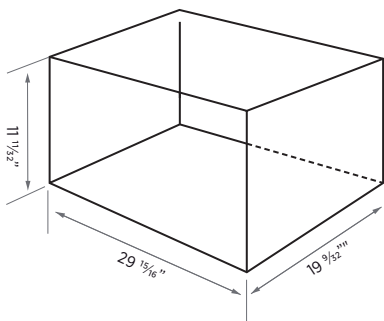
Display: Easy to read, 7 digit, 2 color display

Cooking programs: Convection programs: 12 Compu Cook, Compu Defrost plus 8 Sensor Cook Settings plus Reheat, Popcorn

Performance: Microwave 850W, Convection Element 1,400W

Power requirements: 120 V, 60 WHz, 3 wire, 15 amp circuit

Matching trim kit: N/A





CookSurface Deep

CG363MLDNGB1 (Natural Gas only)

Ceramic Glass

Dimensions: W 35 1/2" x D 20 7/8" x H 3 3/4"

Burners: 3 including 1 Wok burner

Burner Ratings: Small Aero™ burner: 6,800 BTU
 Medium Aero™ burner: 7,600 BTU
 Wok Aero™ burner: 12,000 BTU

Performance: Ceramic glass, Independent three gas burner operation, Quiet glow ignition, Electronic flame settings

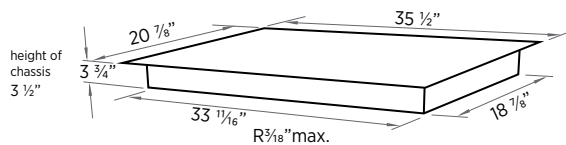
Cleaning: Frameless ceramic glass surface, Surface pooling of spills, Removable support pins and burner heads, Heat assisted cleaning of burner heads

Safety: Flame failure re-ignition system, Key lock, Individual hot surface indicators, Over heat protection

Controls: Intuitive dial control, LED display, Audio and visual electronic feedback, Self diagnostics

Power Requirements: 110 – 120 V, 60 Hz, 0.7 amp circuit

Accessories: Wok support



CookSurface

CG363MLNGB1 (Natural Gas only)

Ceramic Glass

Dimensions: W 35 1/2" x D 16 1/8" x H 3 3/4"

Burners: 3 including 1 Wok burner

Burner Ratings: Small Aero™ burner: 6,800 BTU
 Medium Aero™ burner: 7,600 BTU
 Wok Aero™ burner: 12,000 BTU

Performance: Ceramic glass, Independent three gas burner operation, Quiet glow ignition, Electronic flame settings

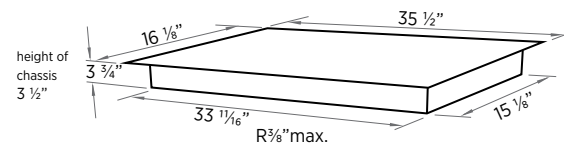
Cleaning: Frameless ceramic glass surface, Surface pooling of spills, Removable support pins and burner heads, Heat assisted cleaning of burner heads

Safety: Flame failure re-ignition system, Key lock, Individual hot surface indicators, Over heat protection

Controls: Intuitive dial control, LED display, Audio and visual electronic feedback, Self diagnostics

Power Requirements: 110 – 120 V, 60 Hz, 0.7 amp circuit

Accessories: Wok support





36" 5 Burner Gas Cooktop

CG365DWACX1

Stainless Steel

Dimensions: W 36" x D 21½" x H 3"

Burners: 5 including 1 Wok burner

Burner Ratings: Center burner: 20,000 – 3,753 BTU
 Rapid burner: 2 x 8,000 – 2,388 BTU
 Semi-rapid burner: 5,800 – 1,365 BTU
 Simmer burner: 3,000 – 512 BTU

Burner ratings shown for Natural Gas connections only

Performance: Innovaive technology, Electronic ignition, LPG and Natural Gas compatible, Cast iron trivets

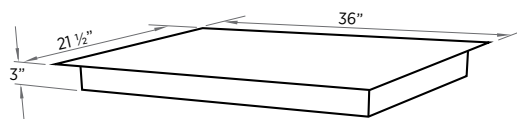
Cleaning: Easy clean cooktop design, Quick component removal

Safety: Auto re-ignition system, 1 Gallon spill containment, Flame failure device

Controls: Cast alloy satin chrome control dials, Burner indicator lights/fault indication, Laser etched graphics

Power Requirements: 110 – 120 V, 60 Hz, 2 amp circuit

Accessories: Wok support, Simmer mat, LPG conversion kit, Cast iron griddle



36" 5 Burner Gas Cooktop

CG365CWACX1

Stainless Steel

Dimensions: W 36" x D 21½" x H 2 5/16"

Burners: 5 including 1 Wok burner

Burner Ratings: Center burner: 14,000 – 3,412 BTU
 Rapid burner: 2 x 8,000 – 2,388 BTU
 Semi-rapid burner: 5,800 – 1,365 BTU
 Simmer burner: 3,000 – 512 BTU

Burner ratings shown for Natural Gas connections only

Performance: Electronic ignition, LPG and Natural Gas compatible, Cast iron trivets

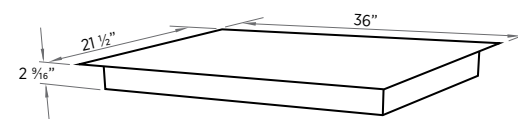
Cleaning: Easy clean cooktop design, Quick component removal

Safety: Auto re-ignition system, 1 Gallon spill containment, Flame failure device

Controls: Cast alloy satin chrome control dials, Laser etched graphics

Power Requirements: 110 – 120 V, 60 Hz, 2 amp circuit

Accessories: Wok support, LPG conversion kit





36" 5 Element Electric Cooktop

CE365DBX1

Ceramic Glass with Stainless Trim

Dimensions: W 35 $\frac{7}{16}$ " x D 20 $\frac{7}{8}$ " x H 4 $\frac{1}{4}$ "

Cooking Zones: 5

Zone Ratings: 700W /1,700W Dual Element Left front
1,200W Right front
1,200W Left rear
1,800W Right rear
1,100W /2,500W Center

Performance: 2 x Dual element, HiLight high speed ribbon elements, SuperSimmer (20 Watts)

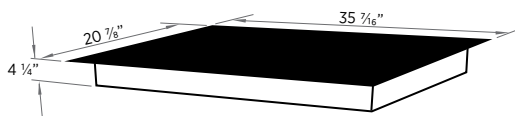
Cleaning: Flat easy clean glass surface

Safety: Individual Surface hot indicators, on indicator light

Controls: Cast alloy satin chrome control dials, Zone indicator lights, Laser etched graphics

Power Requirements: 240 V, 60 Hz, 35 amp circuit

Accessories: N/A





Convection Microwave Trim Kit

Trim kit to suit Convection microwave model number CMOS-24SS-2

CMO-24SS-2 Part No. 70901



Traditional Microwave Trim Kit

Trim kit to suit Traditional microwave model number MOS-24SS-2

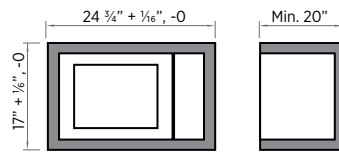
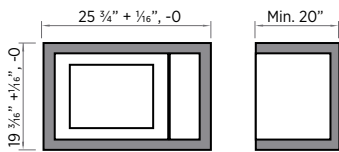
MOTTK-FP Part No. 70902



EuroCloth

Chemical free cloth for Stainless Steel

EuroCloth Part No. 60201



Island trim

3" trim for use with OR48DDPWGX1

48" Island Trim. Part No 89111



Island trim

3" trim for use with OR36SDBGX1

36" Island Trim. Part No 89110



VENT

Kitchen inspiration doesn't exist in a vacuum, but simple and responsive extraction is always important. Built to perform, our venthoods effectively capture and eliminate cooking odors, vapor and steam. Each has been designed as the perfect partner product to our cooktops and include sleek black glass with brushed stainless steel to complement any modern kitchen.

Ventilation

Banish steam, smoke and lingering smells. Fisher & Paykel vent hoods offer a selection of fan speeds and clever features that quietly and efficiently remove them all.

1 Convenient

An interior, wipeable plate makes cleaning easier. Multi-layered filters trap grease effectively. Designed for easy removal, the filters are easy to clean and are dishwasher safe.

2 Responsive

The sleek touch control panel responds to the touch of your finger. Halogen lights provide superb illumination over the entire cooking surface (HC36DTXB1).

3 Efficient

Odors can linger in the kitchen well after cooking. The practical timer feature keeps the appliance working for up to fifteen minutes before it automatically turns itself off (HC36DTXB1).



Fisher & Paykel



42 Rangehoods



36" Ventilation Hood

HC36DTXB1

Stainless Steel

Dimensions: H min 25" – max 40 $\frac{3}{4}$ " x W 35 $\frac{7}{16}$ " x D 19 $\frac{1}{16}$ "

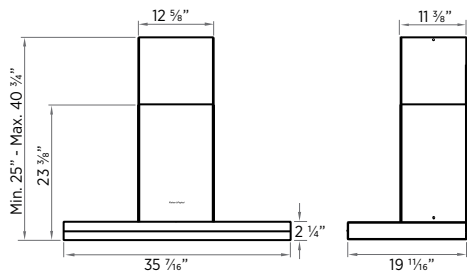
Performance: 4 Fan speeds up to 542CFM

Cleaning: Micromesh filters for easy removal and cleaning

Features: Electronic controls, 2 Halogen lights, Two piece adjustable flue

Power Requirements: 110-120 V, 60 Hz, 10 amp circuit

Optional Accessories: Recirculation Kit (Part no. 791820),
Charcoal filters (Part no. 791772)





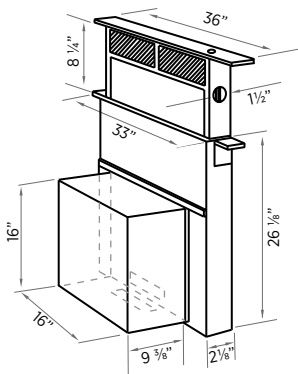
36" Downdraft
DD-36SS

Dimensions: H 8 1/4" W 36" x D 2 1/8"

Performance: Variable speeds up to 600CFM

Cleaning: Micromesh filters for easy removal and cleaning

Power Requirements: 120 V, 60 Hz, 15 max amp circuit







FREEZER

le chill ❄️

fast freeze
❄️ ❄️ ❄️ ❄️


TEMPERATURE

❄️



colder *warmer*

ICE

on


SETT



COOL

Your fridge door is the most used door in your home and every time it is opened the temperature changes around your food. The challenge is maintaining a consistent and controlled environment despite ongoing changes inside and outside the fridge. ActiveSmart™ achieves this through constantly monitoring how you and your family use your fridge, adjusting airflow to maintain a stable and even temperature. So despite highs, lows and occasional gusty winds, when it comes to your fridge, let ActiveSmart™ control the weather to deliver better food care.



ActiveSmart™ Refrigerators

ActiveSmart™ works with you by sensing how you use the fridge and then adjusting the settings accordingly. A range of luxury features complete the picture.

- 1 Innovative**
ActiveSmart™ continuously adjusts the flow of cold air into your fridge and freezer by sensing your daily use and climatic conditions, ensuring it maintains optimum temperatures throughout the fridge.

 - 2 Convenient**
Includes built-in ice maker, chilled filtered water through the door (selected models), large-capacity bottle shelves and Bottle Chill for when friends drop in unannounced.

 - 3 Ergonomic**
Quality full extension runners allow you to fully slide the freezer and vegetable bins in and out, for easy loading and unloading.

 - 4 Intuitive**
The Humidity Control System lets you create the perfect 'micro-climate' in each storage bin for specific fruits and vegetables, keeping them fresh for longer.

 - 5 Precise**
An optional surround kit for selected models gives the refrigerator a clean, built-in look.

 - 6 Efficient**
Alarms on the refrigerator and freezer alert you if the door has been left open. Energy Star on select models.

 - 7 Safe**
Secure glass shelving prevents drips and spills falling on the food below.
-

CoolDrawer™

Designed to change from refrigerator to freezer at the touch of a button. CoolDrawer™ is built on the concept of distributed refrigeration, combining ActiveSmart™ technology in a drawer based design that can be placed anywhere in the kitchen, home or entertainment area. CoolDrawer™ provides five temperature settings to deliver total flexibility.

- 1 Innovative**
Multi-temperature CoolDrawer™ is a world first in refrigeration technology.
- 2 Food Care**
Five temperature settings can be tailored to the needs of your food; fridge, freezer, chill, pantry and wine mode, combining intelligence with convenience.
- 3 Flexibility**
Complements your existing refrigeration and enhances your kitchen design to suit your lifestyle.
- 4 Integrated**
CoolDrawer™ can be integrated to your kitchen design to provide refrigeration in any area.
- 5 Simple**
Easy to use electronic interface can change the CoolDrawer™ temperature at the push of a button.
- 6 Ergonomic**
Easily accessible at waist-height with smooth running, fully telescopic drawers.
- 7 Quality**
Features the highest quality in machined materials and cabinet making.
- 8 Seamless**
Highly engineered finishing ensures a $\frac{1}{8}$ " clearance between front panels as demanded by professional cabinet makers.



Fisher & Paykel



lock



colder



warmer



freezer



chill



fridge



pantry



wine



CoolDrawer™

RB36S25MKIW1

Panel Ready

Optional: EZKleen Stainless Steel door front (Part no. 840545)

Dimensions: H 25 3/16" x W 33 1/16" x D 21 1/16"

Capacity: 3.1 cu.ft Total

Energy Star Certified

Energy Usage: 145 kWh per year Refrigerator, 279 kWh per year Freezer

Performance: 5 Temperature settings: Freezer, Chill, Fridge, Pantry, Wine

Modes:

Chill (31°F): ideal for poultry and fish products

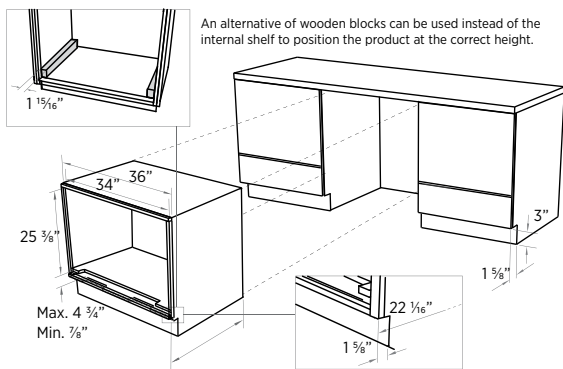
Pantry (54°F): specifically for foods such as tomatoes, bananas, bread and cereals

Wine (45 – 59°F): special settings that preserve and present wine at its optimum temperature

Refrigerator (37°F): ideal storage for most foods, fruits, vegetables, dairy products, processed meats and drinks

Freezer (0°F): general frozen food storage, with the added flexibility of 3 freezer functions: Bottle chill, Fast freeze, Deep freeze

Features: Touch control glass interface, Key lock, Variable temperature control, Fruit and vegetable drawer, Customizable storage container, Drawer alarm, Sabbath mode



Frameless installation option also available, please see www.fisherpaykel.com



French Door Refrigerator

RF195ADUX1

EZKleen Stainless Steel Flat door with Designer handle
Counter Depth Silver prepaint cabinet

Dimensions: H 70" x W 35 5/8" x D 28 1/2"

Capacity: 13.8 cu.ft Refrigerator
5.7 cu.ft Freezer
19.5 cu.ft Total

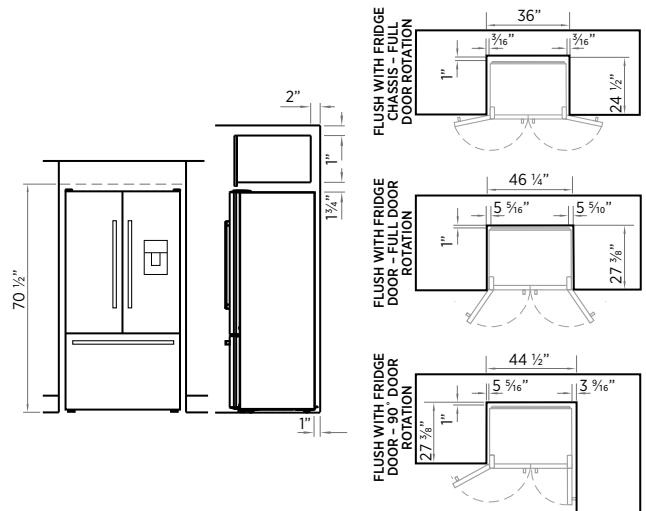
Energy Star Certified

Energy Usage: 445 kWh per year

Performance: ActiveSmart™ system, Frost Free freezer, Adaptive defrost, Humidity control system, Humidity control lid, Sabbath mode

Refrigerator: External water dispenser, Adjustable cantilevered glass shelves, 2 Humidity controlled produce bins, Full extension deli drawer, 2 Half width gallon door shelves, 4 Half width door shelves, 2 Covered door shelves, Door alarm, Halogen light

Freezer: Full extension freezer drawer, Built-in ice maker, 2 Large plastic bin, Ice bin and scoop, Halogen light, Door alarm





RF175 Series Bottom Mount Refrigerator

Models available: RF175WDRUX1, RF175WDLUX1
EZKleen Stainless Steel Flat door with Designer handle
Counter Depth Silver prepaint cabinet

Dimensions: H 70" x W 32 5/8" x D 28 1/2"

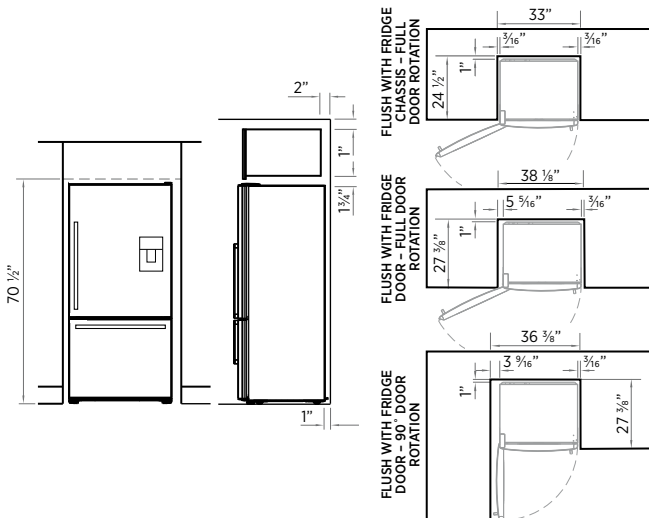
Capacity: 12.4 cu.ft Refrigerator
5.1 cu.ft Freezer
17.5 cu.ft Total

Energy Star Certified
Energy Usage: 440 kWh per year

Performance: ActiveSmart™ system, Frost Free freezer, Adaptive defrost, Humidity control system, Humidity control lid, Sabbath mode

Refrigerator: External water dispenser, Adjustable cantilevered glass shelves, 1 Full width adjustable gallon door shelf, 4 Half width adjustable gallon door shelves, 2 Covered door shelves, Door alarm, Halogen light

Freezer: Full extension freezer drawer, Built-in automatic ice maker, 2 Large plastic bins, Ice bin and scoop, Halogen Light, Door alarm



RF175 Series Bottom Mount Refrigerator

Models available: RF175WCRUX1, RF175WCLUX1
EZKleen Stainless Steel Curved door with Curved handle
Counter Depth Silver prepaint cabinet

Dimensions: H 70" x W 32 5/8" x D 28 1/2"

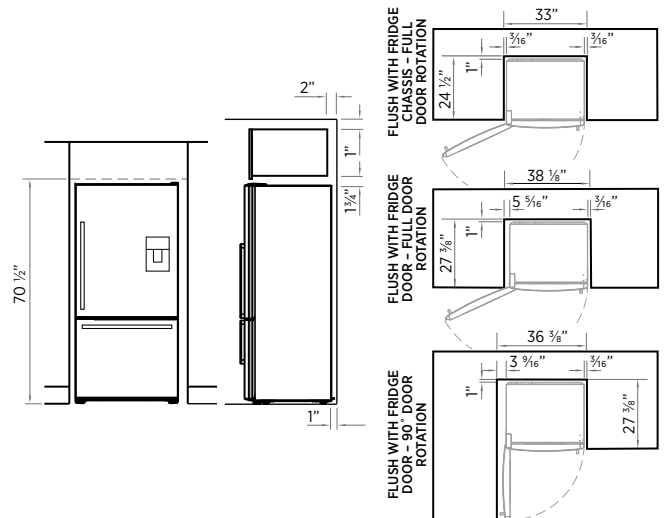
Capacity: 12.4 cu.ft Refrigerator
5.1 cu.ft Freezer
17.5 cu.ft Total

Energy Star Certified
Energy Usage: 440 kWh per year

Performance: ActiveSmart™ system, Frost Free freezer, Adaptive defrost, Humidity control system, Humidity control lid, Sabbath mode

Refrigerator: External water dispenser, Adjustable cantilevered glass shelves, 1 Full width adjustable gallon door shelf, 4 Half width adjustable gallon door shelves, 2 Covered door shelves, Door alarm, Halogen light

Freezer: Full extension freezer drawer, Built-in automatic ice maker, 2 Large plastic bins, Ice bin and scoop, Halogen Light, Door alarm





RF175 Series Bottom Mount Refrigerator

Models available: RF175WDRX1, RF175WDLX1
EZKleen Stainless Steel Flat door with Designer handle
Counter Depth Silver prepaint cabinet

Dimensions: H 70" x W 32 5/8" x D 28 1/2"

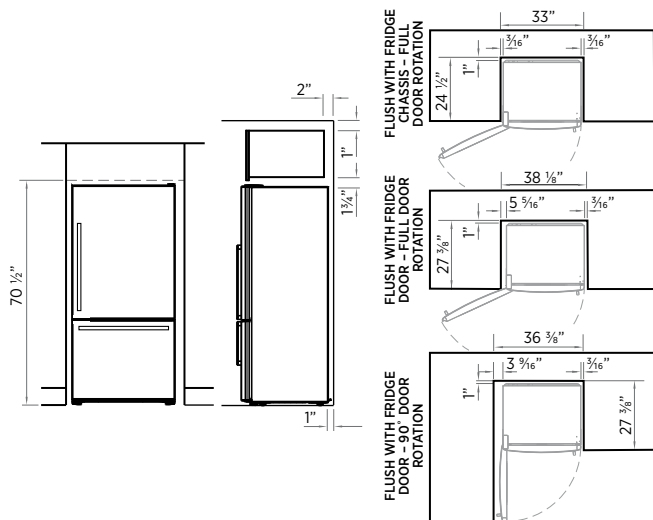
Capacity: 12.4 cu.ft Refrigerator
5.1 cu.ft Freezer
17.5 cu.ft Total

Energy Star Certified
Energy Usage: 440 kWh per year

Performance: ActiveSmart™ system, Frost Free freezer, Adaptive defrost, Humidity control system, Humidity control lid, Sabbath mode

Refrigerator: Adjustable cantilevered glass shelves, 1 Full width adjustable gallon door shelf, 4 Half width adjustable gallon door shelves, 2 Covered door shelves, Door alarm, Halogen light

Freezer: Full extension freezer drawer, 2 Large plastic bins, 2 Ice trays, Halogen Light, Door alarm



RF175 Series Bottom Mount Refrigerator

Models available: RF175WCRX1, RF175WCLX1
EZKleen Stainless Steel with Curved handle
Counter Depth Silver prepaint cabinet

Dimensions: H 70" x W 32 5/8" x D 28 1/2"

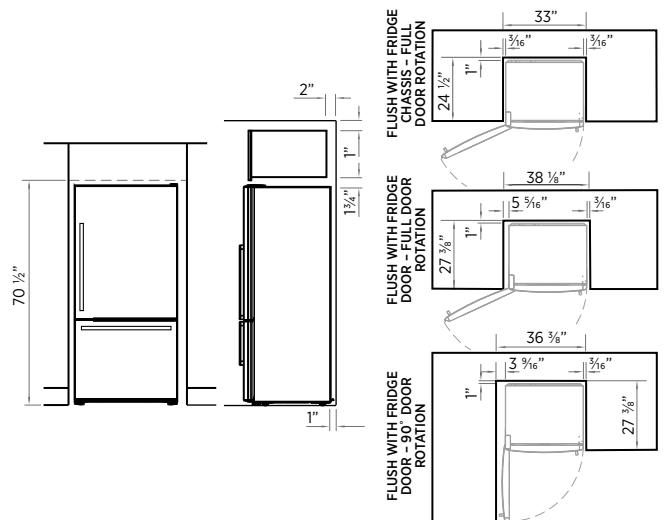
Capacity: 12.4 cu.ft Refrigerator
5.1 cu.ft Freezer
17.5 cu.ft Total

Energy Star Certified
Energy Usage: 440 kWh per year

Performance: ActiveSmart™ system, Frost Free freezer, Adaptive defrost, Humidity control system, Humidity control lid, Sabbath mode

Refrigerator: Adjustable cantilevered glass shelves, 1 Full width adjustable gallon door shelf, 4 Half width adjustable gallon door shelves, 2 Covered door shelves, Door alarm, Halogen light

Freezer: Full extension freezer drawer, 2 Large plastic bins, 2 Ice trays, Halogen Light, Door alarm





RF175 Series Bottom Mount Refrigerator

Models available: RF175WCRW1, RF175WCLW1

White curved door with Curved handle
Counter Depth White prepaint cabinet

Dimensions: H 70" x W 32 5/8" x D 28 1/2"

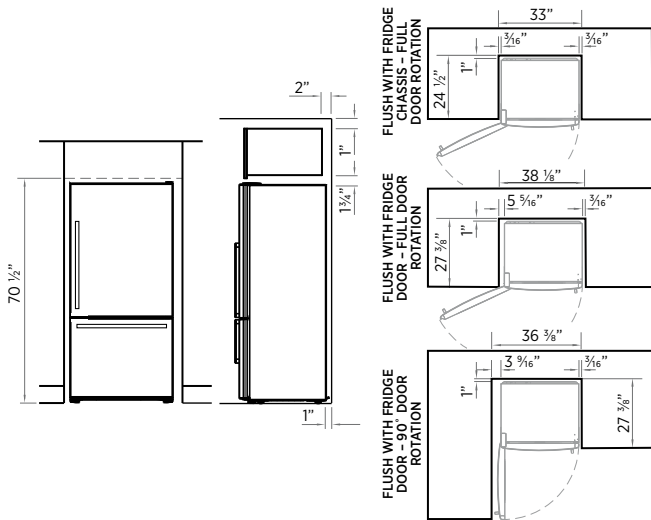
Capacity: 12.4 cu.ft Refrigerator
5.1 cu.ft Freezer
17.5 cu.ft Total

Energy Star Certified
Energy Usage: 440 kWh per year

Performance: ActiveSmart™ system, Frost Free freezer, Adaptive defrost, Humidity control system, Humidity control lid, Sabbath mode

Refrigerator: Adjustable cantilevered glass shelves, 1 Full width adjustable gallon door shelf, 4 Half width adjustable gallon door shelves, 2 Covered door shelves, Door alarm, Halogen light

Freezer: Full extension freezer drawer, 2 Large plastic bins, 2 Ice trays, Halogen Light, Door alarm





E522B Series Ice & Water Refrigerator

Models available: E522BRXFDDU, E522BLXFDDU
EZKleen Stainless Steel Flat door with Designer handle
Counter Depth Silver prepaint cabinet

Dimensions: H 67" x W 31 1/8" x D 28 3/4"

Capacity: 12.4 cu.ft Refrigerator
5.2 cu.ft Freezer
17.6 cu.ft Total

Energy Usage: 535 kWh per year

Performance: ActiveSmart™ system, Frost Free freezer, Adaptive defrost, Humidity control system, Humidity control lid, Sabbath mode

Refrigerator: Water dispenser, Adjustable glass shelves, Bottle rack, 2 Full width adjustable door shelves, 2 Half width adjustable door shelves, 2 Covered door shelves, 2 Egg trays, Door alarm, Halogen light

Freezer: Built-in automatic ice maker, 1 Large plastic bin, 2 Small plastic bins, Ice bin and scoop, 1 Center roll out tray, Door alarm



E522B Series Ice & Water Refrigerator

Models available: E522BRXU, E522BLXU
EZKleen Stainless Steel Curved door with Curved handle
Counter Depth Silver prepaint cabinet

Dimensions: H 67" x W 31 1/8" x D 29"

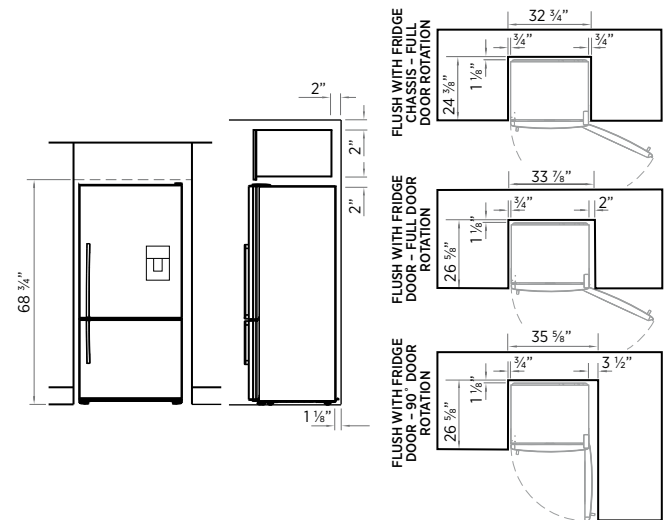
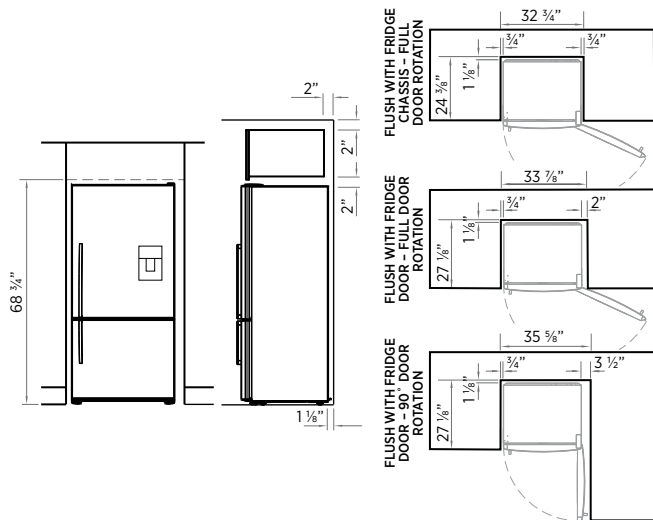
Capacity: 12.4 cu.ft Refrigerator
5.2 cu.ft Freezer
17.6 cu.ft Total

Energy Usage: 535 kWh per year

Performance: ActiveSmart™ system, Frost Free freezer, Adaptive defrost, Humidity control system, Humidity control lid, Sabbath mode

Refrigerator: Water dispenser, Adjustable glass shelves, Bottle rack, 2 Full width adjustable door shelves, 2 Half width adjustable door shelves, 2 Covered door shelves, 2 Egg trays, Door alarm, Halogen light

Freezer: Built-in automatic ice maker, 1 Large plastic bin, 2 Small plastic bins, Ice bin and scoop, 1 Center roll out tray, Door alarm





E522B Series Bottom Mount Refrigerator

Models available: E522BRXFD, E522BLXFD
 EZKleen Stainless Steel Flat door with Designer handle
 Counter Depth Silver prepaint cabinet

Dimensions: H 66 3/4" x W 31 1/8" x D 28 3/4"

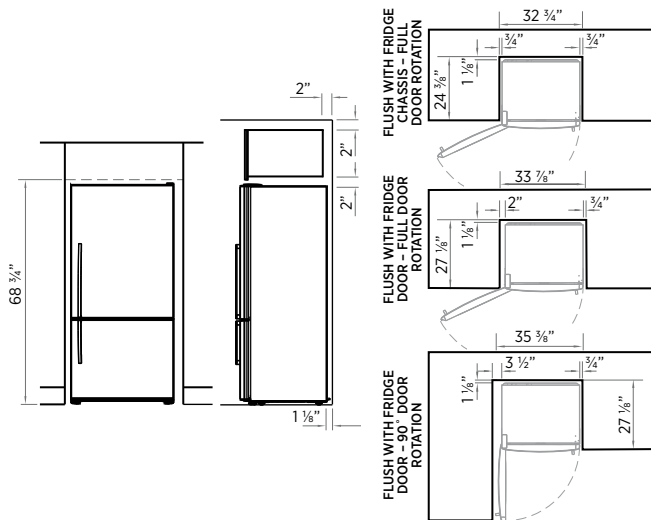
Capacity: 12.4 cu.ft Refrigerator
 5.2 cu.ft Freezer
 17.6 cu.ft Total

Energy Usage: 535 kWh per year

Performance: ActiveSmart™ system, Frost Free freezer, Adaptive defrost, Humidity control system, Humidity control lid, Sabbath mode

Refrigerator: Adjustable glass shelves, Bottle rack, 2 Full width adjustable door shelves, 2 Half width adjustable door shelves, 2 Covered door shelves, 2 Egg trays, Door alarm, Halogen light

Freezer: 1 Large plastic bin, 2 Small plastic bins, 2 Ice trays, 1 Center roll out tray, Door alarm



E522B Series Bottom Mount Refrigerator

Models available: E522BRX, E522BLX
 EZKleen Stainless Steel curved door with Curved handle
 Counter Depth Silver prepaint cabinet

Dimensions: H 66 3/4" x W 31 1/8" x D 29"

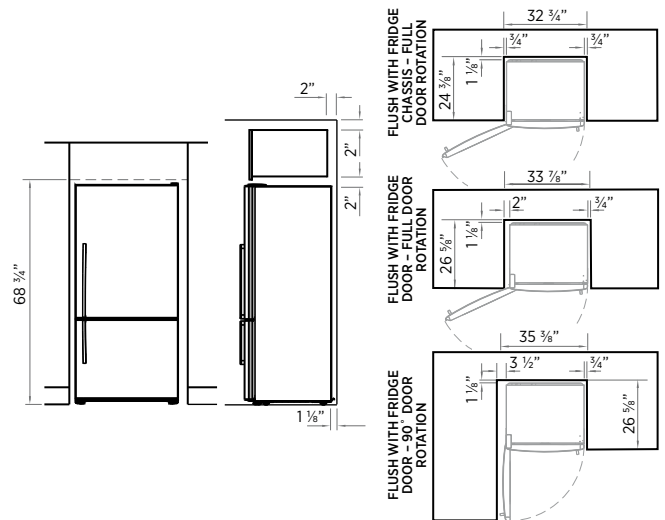
Capacity: 12.4 cu.ft Refrigerator
 5.2 cu.ft Freezer
 17.6 cu.ft Total

Energy Usage: 535 kWh per year

Performance: ActiveSmart™ system, Frost Free freezer, Adaptive defrost, Humidity control system, Humidity control lid, Sabbath mode

Refrigerator: Adjustable glass shelves, Bottle rack, 2 Full width adjustable door shelves, 2 Half width adjustable door shelves, 2 Covered door shelves, 2 Egg trays, Door alarm, Halogen light

Freezer: 1 Large plastic bin, 2 Small plastic bins, 2 Ice trays, 1 Center roll out tray, Door alarm





E522B Series Bottom Mount Refrigerator

Models available: E522BRE, E522BLE

White Curved door with Curved handle

Counter Depth White prepaint cabinet

Dimensions: H 66 ¾" x W 31 ½" x D 29"

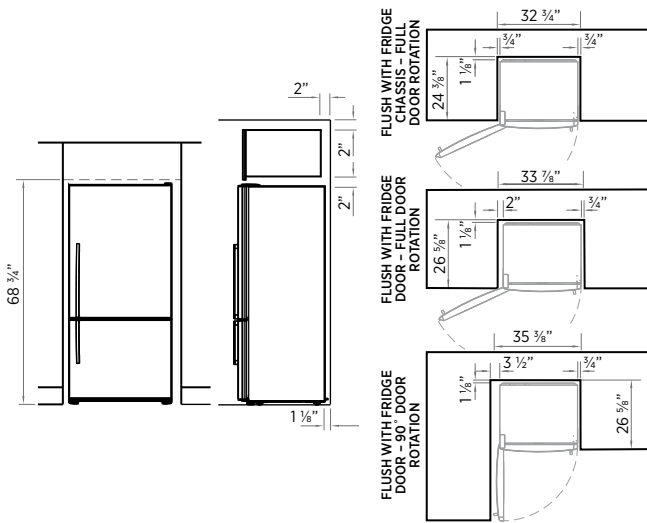
Capacity: 12.4 cu.ft Refrigerator
5.2 cu.ft Freezer
17.6 cu.ft Total

Energy Usage: 535 kWh per year

Performance: ActiveSmart™ system, Frost Free freezer, Adaptive defrost, Humidity control system, Humidity control lid, Sabbath mode

Refrigerator: Adjustable glass shelves, 2 Full width adjustable door shelves, 2 Half width adjustable door shelves, 2 Covered door shelves, 2 Egg trays, Door alarm, Halogen light

Freezer: 1 Large plastic bin, 2 Small plastic bins, 2 Ice trays, 1 Center roll out tray, Door alarm





Side by Side Refrigerator

RX216DT7XV2

EZKleen Stainless Steel Flat door with Designer handle
Counter Depth Silver textured cabinet



Dimensions: H 70" x W 35 5/8" x D 27 3/8" (excl. handles)

Capacity: 13.5 cu.ft Refrigerator
8.1 cu.ft Freezer
21.6 cu.ft Total

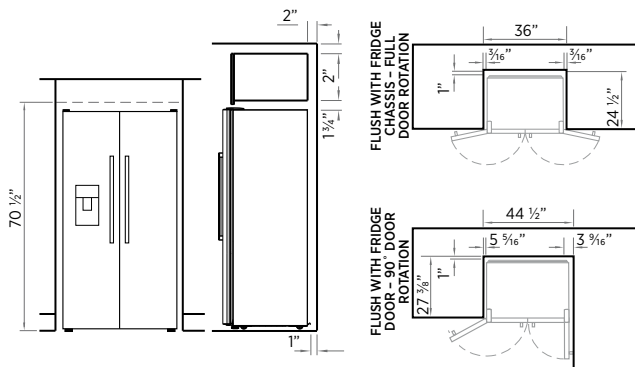
Energy Star Certified

Energy Usage: 538 kWh per year

Performance: Ice and water dispenser, Tri-sensor control system, Frost free freezer, Automatic defrost, Humidity controlled drawer, Temperature controlled drawer, Speed ice, Vacation mode, Bottle chill, Beverage chiller, Max cool

Refrigerator: 3 Slide out shelves, 1 Static shelf, Dairy compartment, 1 Adjustable gallon door shelf, 2 Adjustable door shelves, Bottle holder

Freezer: 1 Narrow door bin, 3 Wide door bins, Wire baskets



Side by Side Refrigerator

RX216CT4XV2

EZKleen Stainless Steel Flat door with Curved handle
Counter Depth Silver textured cabinet



Dimensions: H 70" x W 35 5/8" x D 27 3/8" (excl. handles)

Capacity: 13.5 cu.ft Refrigerator
8.1 cu.ft Freezer
21.6 cu.ft Total

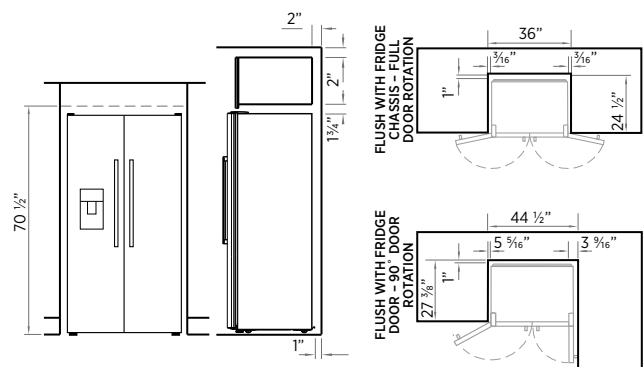
Energy Star Certified

Energy Usage: 538 kWh per year

Performance: Ice and water dispenser, Tri-sensor control system, Frost free freezer, Automatic defrost, Humidity controlled drawer, Temperature controlled drawer, Beverage chiller

Refrigerator: 3 Slide out shelves, 1 Static shelf, Dairy compartment, 1 Adjustable gallon door shelf, 2 Adjustable door shelves

Freezer: 1 Narrow door bin, 3 Wide door bins, Wire baskets





Stainless Panel for Refrigeration Drawer

For use with RB36S25MKIW

Part No. 840545



Water Filter

To be used with Ice & Water dispensing E522B's

Part No. 836847



Water Filter

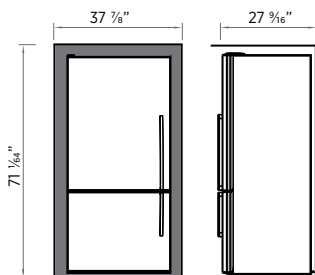
To be used with Ice & Water dispensing RF175's, RF195's and RX216's models

Part No. 13040210

Surround Kit – Left Hinge Refrigeration

For use with a left hinge E522B

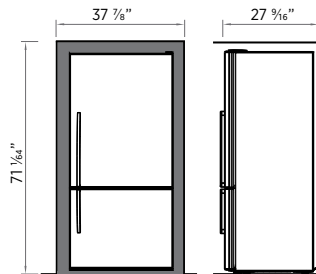
Part No. 818758



Surround Kit – Right Hinge Refrigeration

For use with a right hinge E522B

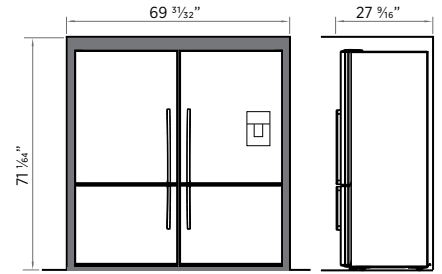
Part No. 818762



Surround Kit – Left and Right Hinge Joined

For use with two E522Bs joined together

Part No. 818759



Joiner Kit



Joiner Kit

Allows you to seamlessly join two E522 models together

Part No. 819264 (Silver) 819263 (White)

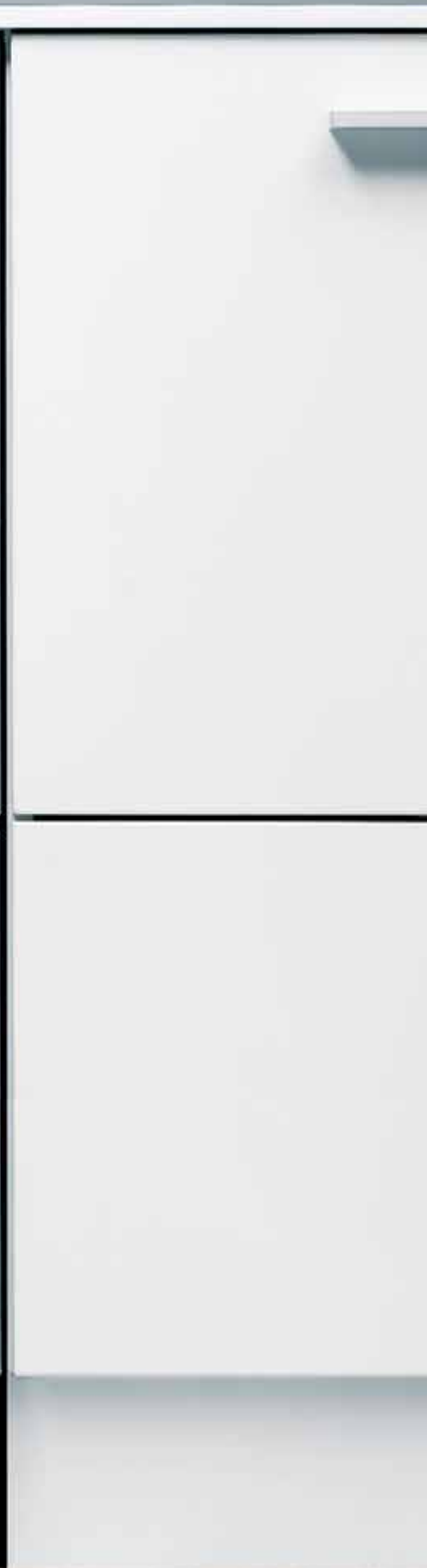








Fisher & Paykel



CLEAN

Why shouldn't cleaning up be as enjoyable as cooking itself? The DishDrawer™ dishwasher series is designed to make life easy. Wide, tall, double and single drawer options allow you to choose the combination that works for your lifestyle. The DishDrawer™ can easily be concealed behind kitchen cabinetry to seamlessly blend in with your kitchen and the ergonomic design requires less movement to open, load and close — minimizing bending.



Fisher & Paykel



DishDrawer™ Wide Dishwasher

A simple solution for entertainers and large families, the DishDrawer™ Wide is an enlarged version of the standard DishDrawer™ dishwasher. At 36" wide it accommodates nine place settings, has fully adjustable racking and the tub design easily fits large platters, chopping boards, pans and roasting dishes. Also available in an integrated model that integrates seamlessly in with your kitchen cabinetry.

- 1 Innovative**

Before washing begins, detergent goes through the world's first flow-through dispenser to ensure it is thoroughly dissolved, providing a faster, more hygienic wash with no hint of detergent burn.

- 2 Convenient**

Taller than the standard DishDrawer™ dishwasher, so you can fit large plates up to 12 $\frac{7}{16}$ " diameter. Racking is designed to hold long utensils, and can fold away to free up space.

- 3 Ergonomic**

As easy to open and close as a kitchen drawer, loading and unloading requires minimal bending. Easy-to-use folding tines allow you to place large pots, platters and bowls into the drawer with ease.

- 4 Efficient**

A choice of nine wash programs, including Eco options to minimize water and energy usage.

- 5 Safe**

Includes a key lock and child safety lock.

- 6 Eco friendly**

Uses only 3.7 gallons of water on a Normal Eco wash program.



DishDrawer™ Dishwasher

We created the DishDrawer™ dishwasher over a decade ago and revolutionized the way we cleaned our dishes. We continue to design ergonomically superior DishDrawer™ dishwashers that require less movement to open, load and close and require no bending. We have also found new ways to make dishwashing even easier by increasing the height of the drawer to allow for even larger plates and platters.

- 1 Innovative**
World first design and configuration

- 2 Convenient**
The double DishDrawer™ dishwasher lets the user match the wash program to the exact load type in each drawer.

- 3 Seamless Integration**
Our latest DishDrawer™ dishwasher features rear venting and a fully adjustable door option. Clean lines are achieved by incorporating wireless controls, eliminating the need for an external interface.

- 4 Intuitive**
Before washing begins, detergent goes through the world's first flow through dispenser to ensure it is thoroughly dissolved, providing a faster, more hygienic wash with no hint of detergent burn.

- 5 Ergonomic**
As easy to open and close as a kitchen drawer, loading and unloading requires minimal bending. Easy-to-use folding tines allow you to place large pots, platters and bowls into the drawer with ease. Single drawers can be placed in the most convenient locations, minimizing unnecessary bending.

- 6 Efficient**
A choice of nine wash programs, including Eco options to minimize water and energy usage.

- 7 Capacity**
7 place settings per drawer. DishDrawer™ Tall dishwashers hold large 13" plates and platters.

- 8 Eco friendly**
Energy Star rated for energy efficiency, CEE Tier 1 for Single DishDrawers™ and Tier 2 for Double DishDrawers™ energy and water efficiency rating.



DishDrawer™ Wide Dishwasher

DD36SDFTX2
EZKleen Stainless Steel
Designer handle

Dimensions: H 18 13/16" x W 35 1/4" x D 22 1/2"

Energy Rating: ENERGY STAR rated CEE tier 1
Water Usage: Uses as little as 3.7 gallons of water, 2.8 on fast wash

Performance: SmartDrive™ intelligent technology, Intelligent load sensing for optimum performance, Flow through detergent dispenser, Quiet operation

Capacity and loading: 9 Place settings, Flexible racking system, Fold down and pitch adjustable tines, Adjustable racks and cup racks, Accommodates long stemmed wine glasses, Accommodates plates up to 12 7/16"

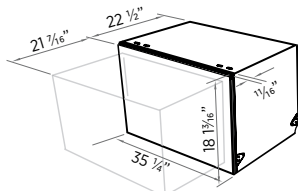
Wash programs: 9 wash programs, Eco options, Permanent memory of the last cycle used

Safety: Three stage total flood protection

Controls: Easy to use, Primary and secondary (concealed) control panels with single touch programming, Key lock, Child lock, End of cycle beeps, One button start, Delay start option up to 12 hours, Rinse aid indicator light and lens, Electronic fault/Diagnostic indicator

Power Requirements: 110-120 V, 60 Hz, 6.9 amp circuit

Accessories: Knife clip, Multi purpose clip



refer to installation manual for more measurements



Integrated DishDrawer™ Wide Dishwasher

DD36STI2
Integrated (apply your own cabinetry facade)
Designer handle shown (apply your own handle)

Dimensions: H 18 13/16" x W 33 11/16" (min) x D 22 1/2"

Energy Rating: ENERGY STAR rated CEE tier 1
Water Usage: Uses as little as 3.7 gallons of water, 2.8 on fast wash

Performance: SmartDrive™ intelligent technology, Intelligent load sensing for optimum performance, Flow through detergent dispenser, Quiet operation

Capacity and loading: 9 Place settings, Flexible racking system, Fold down and pitch adjustable tines, Adjustable racks and cup racks, Accommodates long stemmed wine glasses, Accommodates plates up to 12 7/16"

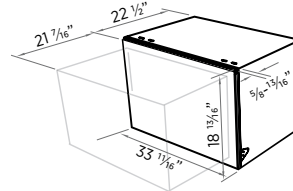
Wash programs: 9 wash programs, Eco options, Permanent memory of the last cycle used

Safety: Three stage total flood protection

Controls: Wireless control badge, Easy to use, Primary and secondary (concealed) control panels with single touch programming, Key lock, Child lock, End of cycle beeps, One button start, Delay start option up to 12 hours, Rinse aid indicator light and lens, Electronic fault/Diagnostic indicator

Power Requirements: 110-120 V, 60 Hz, 6.9 amp circuit

Accessories: Knife clip, Multi purpose clip



refer to installation manual for more measurements



Double DishDrawer™ Tall Dishwasher

DD24DDFTX7

EZKleen Stainless Steel
Designer handle

Dimensions: H 34 – 36 ³/₁₆" x W 23 ³/₁₆" x D 22 ¹/₂"

Energy Rating: ENERGY STAR rated CEE tier 2

Water Usage: Uses as little as 2 gallons of water per drawer

Performance: SmartDrive™ intelligent technology, Intelligent load sensing for optimum performance, Flow through detergent dispenser, Quiet operation

Capacity and loading: 7 Place settings per drawer, Flexible racking system, Fold down and pitch adjustable tines, Adjustable racks and cup racks, Accommodates long stemmed wine glasses, Top drawer accommodates plates up to 13"

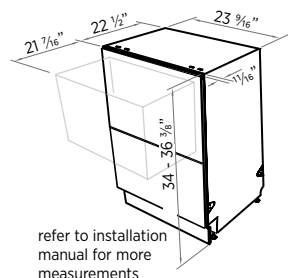
Wash programs: 9 wash programs, Eco options, Permanent memory of the last cycle used

Safety: Three stage total flood protection

Controls: Easy to use primary and secondary concealed control panels with single touch programming, Key lock, Child lock, End of cycle beeps, One button start, Energy saving delay start option up to 12 hours, Wash progress and time remaining display, Digital display, Rinse aid indicator light and lens, Electronic fault/Diagnostic indicator

Power Requirements: 110-120 V, 60 Hz, 10.6 amp circuit

Accessories: Knife clip, Kickstrip



Integrated Double DishDrawer™ Tall Dishwasher

DD24DTI7, DD24DHTI7 (Water Softener option)

Integrated (apply your own cabinetry facade)
Designer handle shown (apply your own handles)

Dimensions: H 34 – 36 ³/₁₆" x W 23 ³/₁₆" x D 22 ¹/₂"

Energy Rating: ENERGY STAR rated CEE tier 2

Water Usage: Uses as little as 2 gallons of water per drawer

Performance: : SmartDrive™ intelligent technology, Intelligent load sensing for optimum performance, Flow through detergent dispenser, Quiet operation, Water softener model option

Capacity and Loading: 7 Place settings per drawer, Flexible racking system, Fold down and pitch adjustable tines, Adjustable racks and cup racks, Accommodates long stemmed wine glasses, Top drawer accommodates plates up to 13"

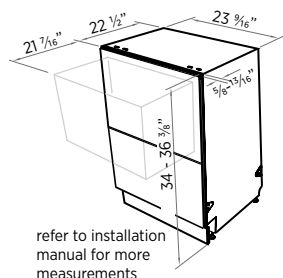
Wash Programs: 9 wash programs, Eco options, Permanent memory of the last cycle used

Safety: Three stage total flood protection

Controls: Wireless control badge, Easy to use primary and secondary concealed control panels with single touch programming, Key lock, Child lock, End of cycle beeps, One button start, Energy saving delay start option up to 12 hours, Wash progress and time remaining display, Digital display, Rinse aid indicator light and lens, Electronic fault/Diagnostic indicator

Power Requirements: 110-120 V, 60 Hz, 10.6 amp circuit

Accessories: Knife clip, Kickstrip





Double DishDrawer™ Tall Dishwasher

DD24DCTX7, DD24DCTX7 (Water Softener option)
EZKleen Stainless Steel
Recessed handle

Dimensions: H 34 – 36 3/8" x W 23 3/16" x D 22 15/16"

Energy Rating: ENERGY STAR rated CEE tier 2
Water Usage: Uses as little as 2 gallons of water per drawer

Performance: SmartDrive™ intelligent technology, Intelligent load sensing for optimum performance, Flow through detergent dispenser, Quiet operation, Water softener model option

Capacity and Loading: 7 Place settings per drawer, Flexible racking system, Fold down and pitch adjustable tines, Adjustable racks and cup racks, Accommodates long stemmed wine glasses, Top Drawer accommodates plates up to 13"

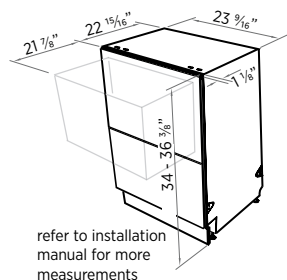
Wash Programs: 9 wash programs, Eco options, Permanent memory of the last cycle used

Safety: Three stage total flood protection

Controls: Easy to use primary and secondary concealed control panels with single touch programming, Key lock, Child lock, End of cycle beeps, One button start, Energy saving delay start option up to 12 hours, Wash progress and time remaining display, Digital display, Rinse aid indicator light and lens, Electronic fault/Diagnostic indicator

Power Requirements: 110-120 V, 60Hz, 10.6 amp circuit

Accessories: Knife clip, Kickstrip



Double DishDrawer™ Tall Dishwasher

DD24DCTB7
Black
Recessed handle

Dimensions: H 34 – 36 3/8" x W 23 3/16" x D 22 15/16"

Energy Rating: ENERGY STAR rated CEE tier 2
Water Usage: Uses as little as 2 gallons of water per drawer

Performance: SmartDrive™ intelligent technology, Intelligent load sensing for optimum performance, Flow through detergent dispenser, Quiet operation

Capacity and Loading: 7 Place settings per drawer, Flexible racking system, Fold down and pitch adjustable tines, Adjustable racks and cup racks, Accommodates long stemmed wine glasses, Top Drawer accommodates plates up to 13"

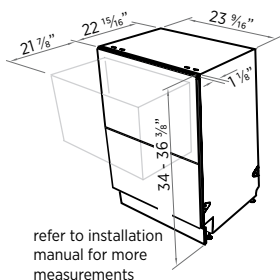
Wash Programs: 9 wash programs, Eco options, Permanent memory of the last cycle used

Safety: Three stage total flood protection

Controls: Easy to use primary and secondary concealed control panels with single touch programming, Key lock, Child lock, End of cycle beeps, One button start, Energy saving delay start option up to 12 hours, Wash progress and time remaining display, Digital display, Rinse aid indicator light and lens, Electronic fault/Diagnostic Indicator

Power Requirements: 110-120 V, 60Hz, 10.6 amp circuit

Accessories: Knife clip, Kickstrip





Double DishDrawer™ Tall Dishwasher

DD24DCTW7

White

Recessed handle

Dimensions: H 34 – 36 ³/₈" x W 23 ⁵/₁₆" x D 22 ¹⁵/₁₆"

Energy Rating: ENERGY STAR rated CEE tier 2

Water Usage: Uses as little as 2 gallons of water per drawer

Performance: SmartDrive™ intelligent technology, Intelligent load sensing for optimum performance, Flow through detergent dispenser, Quiet operation

Capacity and Loading: 7 Place settings per drawer, Flexible racking system, Fold down and pitch adjustable tines, Adjustable racks and cup racks, Accommodates long stemmed wine glasses, Top drawer accommodates plates up to 13"

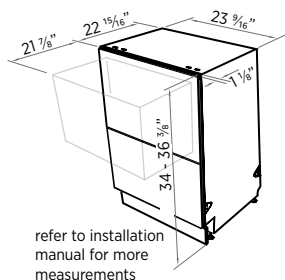
Wash Programs: 9 wash programs, Eco options, Permanent memory of the last cycle used

Safety: Three stage total flood protection

Controls: Easy to use primary and secondary concealed control panels with single touch programming, Key lock, Child lock, End of cycle beeps, One button start, Energy saving delay start option up to 12 hours, Wash progress and time remaining display, Digital display, Rinse aid indicator light and lens, Electronic fault/Diagnostic indicator

Power Requirements: 110-120 V, 60Hz, 10.6 amp circuit

Accessories: Knife clip, Kickstrip



Single DishDrawer™ Tall Dishwasher

DD24SDFTX7

EZKleen Stainless Steel

Designer handle

Dimensions: H 18 ¹³/₁₆" x W 23 ⁵/₁₆" x D 22 ¹/₂"

Energy Rating: ENERGY STAR rated CEE tier 1

Water Usage: Uses as little as 2 gallons of water

Performance: SmartDrive™ intelligent technology, Intelligent load sensing for optimum performance, Flow through detergent dispenser, Quiet operation

Capacity and Loading: 7 Place settings, Flexible racking system, Fold down and pitch adjustable tines, Adjustable racks and cup racks, Accommodates long stemmed wine glasses, Accommodates plates up to 13"

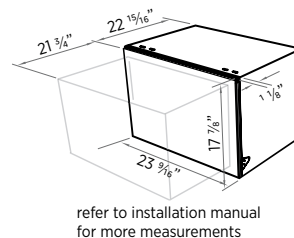
Wash Programs: 9 wash programs, Eco options, Permanent memory of the last cycle used

Safety: Three stage total flood protection

Controls: Easy to use primary and secondary concealed control panels with single touch programming, Key lock, Child lock, End of cycle beeps, One button start, Energy saving delay start option up to 12 hours, Rinse aid indicator light and lens, Electronic fault/Diagnostic indicator

Power Requirements: 110-120 V, 60Hz, 5.8 amp circuit

Accessories: Knife clip





Integrated Single DishDrawer™ Tall Dishwasher

DD24STI7, DD24SHTI7 (Water Softener option)
 Integrated (apply your own cabinetry facade)
 Designer handle shown (apply your own handle)

Dimensions: H 17 7/8" - 18 13/16" x W 23 5/16" x D 22 1/2"

Energy Rating: ENERGY STAR rated CEE tier 1
Water Usage: Uses as little as 2 gallons of water

Performance: SmartDrive™ intelligent technology, Intelligent load sensing for optimum performance, Flow through detergent dispenser, Quiet operation, Water softener model option

Capacity and Loading: 7 Place settings, Flexible racking system, Fold down and pitch adjustable tines, Adjustable racks and cup racks, Accommodates long stemmed wine glasses, Accommodates plates up to 13"

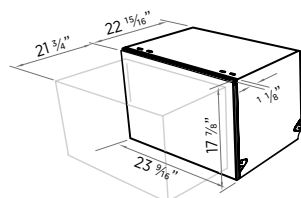
Wash programs: 9 wash programs, Eco options, Permanent memory of the last cycle used

Safety: Three stage total flood protection

Controls: Wireless control badge, Easy to use primary and secondary concealed control panels with single touch programming, Key lock, Child lock, End of cycle beeps, One button start, Energy saving delay start option up to 12 hours, Rinse aid indicator light and lens, Electronic fault/Diagnostic indicator

Power Requirements: 110-120 V, 60Hz, 5.8 amp circuit

Accessories: Knife clip



refer to installation manual for more measurements



Single DishDrawer™ Tall Dishwasher

DD24SCTX7, DD24SCHTX7 (Water Softener option)
 EZKleen Stainless Steel
 Recessed handle

Dimensions: H 17 7/8" x W 23 5/16" x D 22 15/16"

Energy Rating: ENERGY STAR rated CEE tier 1
Water Usage: Uses as little as 2 gallons of water

Performance: SmartDrive™ intelligent technology, Intelligent load sensing for optimum performance, Flow through detergent dispenser, Quiet operation, Water softener model option

Capacity and Loading: 7 Place settings, Flexible racking system, Fold down and pitch adjustable tines, Adjustable racks and cup racks, Accommodates long stemmed wine glasses, Accommodates plates up to 13"

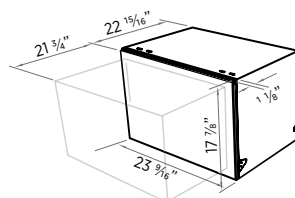
Wash Programs: 9 wash programs, Eco options, Permanent memory of the last cycle used

Safety: Three stage total flood protection

Controls: Easy to use primary and secondary concealed control panels with single touch programming, Key lock, Child lock, End of cycle beeps, One button start, Energy saving delay start option up to 12 hours, Wash progress and time remaining display, Digital display, Rinse aid indicator light and lens, Electronic fault/Diagnostic indicator

Power Requirements: 110-120 V, 60Hz, 5.8 amp circuit

Accessories: Knife clip



refer to installation manual for more measurements



Single DishDrawer™ Tall Dishwasher

DD24SCTB7

Black

Recessed handle

Dimensions: H17⁷/₈" x W23⁵/₁₆" x D22¹⁵/₁₆"

Energy Rating: ENERGY STAR rated CEE tier 1

Water Usage: Uses as little as 2 gallons of water

Performance: SmartDrive™ intelligent technology, Intelligent load sensing for optimum performance, Flow through detergent dispenser, Quiet operation, Water softener

Capacity and Loading: 7 Place settings, Flexible racking system, Fold down and pitch adjustable tines, Adjustable racks and cup racks, Accommodates long stemmed wine glasses, Accommodates plates up to 13"

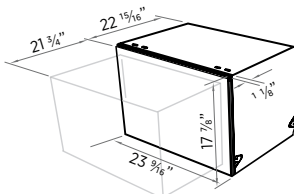
Wash Programs: 9 wash programs, Eco options, Permanent memory of the last cycle used

Safety: Three stage total flood protection

Controls: Easy to use primary and secondary concealed control panels with single touch programming, Key lock, Child lock, End of cycle beeps, One button start, Energy saving delay start option up to 12 hours, Wash progress and time remaining display, Digital display, Rinse aid indicator light and lens, Electronic fault / Diagnostic Indicator

Power Requirements: 110-120 V, 60Hz, 5.8 amp circuit

Accessories: Knife clip



refer to installation manual for more measurements



Single DishDrawer™ Tall Dishwasher

DD24SCTW7

White

Recessed handle

Dimensions: H17⁷/₈" x W23⁵/₁₆" x D22¹⁵/₁₆"

Energy Rating: ENERGY STAR rated CEE tier 1

Water Usage: Uses as little as 2 gallons of water

Performance: SmartDrive™ intelligent technology, Intelligent load sensing for optimum performance, Flow through detergent dispenser, Quiet operation, Water softener

Capacity and Loading: 7 Place settings, Flexible racking system, Fold down and pitch adjustable tines, Adjustable racks and cup racks, Accommodates long stemmed wine glasses, Accommodates plates up to 13"

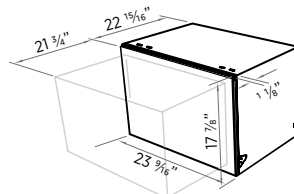
Wash Programs: 9 wash programs, Eco options, Permanent memory of the last cycle used

Safety: Three stage total flood protection

Controls: Easy to use primary and secondary concealed control panels with single touch programming, Key lock, Child lock, End of cycle beeps, One button start, Energy saving delay start option up to 12 hours, Wash progress and time remaining display, Digital display, Rinse aid indicator light and lens, Electronic fault / Diagnostic indicator

Power Requirements: 110-120 V, 60Hz, 5.8 amp circuit

Accessories: Knife clip



refer to installation manual for more measurements



Double DishDrawer™ Dishwasher

DD24DDFX7
EZKleen Stainless Steel
Designer handle

Dimensions: H 32 5/16" – 34 5/8" x W 23 9/16" x D 22 1/2"

Energy Rating: ENERGY STAR rated CEE tier 2
Water Usage: Uses as little as 2 gallons of water per drawer

Performance: SmartDrive™ intelligent technology, Intelligent load sensing for optimum performance, Flow through detergent dispenser, Quiet operation

Capacity and Loading: 7 Place settings per drawer, Flexible racking system, Fold down and pitch adjustable tines, Adjustable racks and cup racks, Accommodates long stemmed wine glasses, Accommodates plates up to 11 1/2"

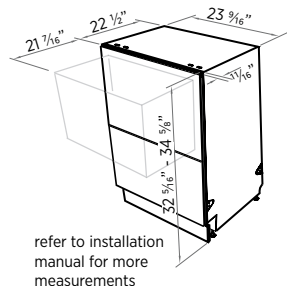
Wash Programs: 9 wash programs, Genuine half load wash option, Eco options, Permanent memory of the last cycle used

Safety: Three stage total flood protection

Controls: Easy to use primary and secondary concealed control panels with single touch programming, Key lock, Child lock, End of cycle beeps, One button start, Energy saving delay start option up to 12 hours, Rinse aid indicator light and lens, Electronic fault/Diagnostic indicator

Power Requirements: 110-120 V, 60Hz, 10.6 amp circuit

Accessories: Knife clip, Kickstrip



Double DishDrawer™ Dishwasher

DD24DI7
Integrated (apply your own cabinetry facade)
Designer handle shown (apply your own handles)

Dimensions: H 32 5/16" – 34 5/8" x W 23 9/16" x D 22 1/2"

Energy Rating: ENERGY STAR rated CEE tier 2
Water Usage: Uses as little as 2 gallons of water per drawer

Performance: SmartDrive™ intelligent technology, Intelligent load sensing for optimum performance, Flow through detergent dispenser, Quiet operation

Capacity and Loading: 7 Place settings per drawer, Flexible racking system, Fold down and pitch adjustable tines, Adjustable racks and cup racks, Accommodates long stemmed wine glasses, Accommodates plates up to 11 1/2"

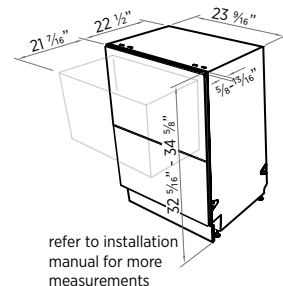
Wash Programs: 9 wash programs, Genuine half load wash option, Eco options, Permanent memory of the last cycle used

Safety: Three stage total flood protection

Controls: Wireless control badge, Easy to use primary and secondary concealed control panels with single touch programming, Key lock, Child lock, End of cycle beeps, One button start, Energy saving delay start option up to 12 hours, Rinse aid indicator light and lens, Electronic fault/Diagnostic indicator

Power Requirements: 110-120 V, 60Hz, 10.6 amp circuit

Accessories: Knife clip, Kickstrip





Double DishDrawer™ Dishwasher

DD24DCX7
EZKleen Stainless Steel
Recessed handle

Dimensions: H 32 5/16" – 34 5/8" x W 23 9/16" x D 22 15/16"

Energy Rating: ENERGY STAR rated CEE tier 2
Water Usage: Uses as little as 2 gallons of water per drawer

Performance: SmartDrive™ intelligent technology, Intelligent load sensing for optimum performance, Flow through detergent dispenser, Quiet operation

Capacity and Loading: 7 Place settings per drawer, Flexible racking system, Fold down and pitch adjustable tines, Adjustable racks and cup racks, Accommodates long stemmed wine glasses, Accommodates plates up to 11 1/2"

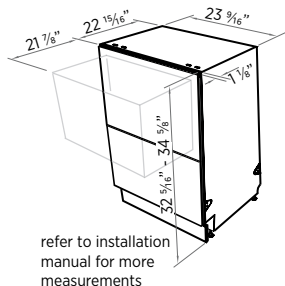
Wash Programs: 9 wash programs, Genuine half load wash option, Eco options, Permanent memory of the last cycle used

Safety: Three stage total flood protection

Controls: Easy to use primary and secondary concealed control panels with single touch programming, Key lock, Child lock, End of cycle beeps, One button start, Energy saving delay start option up to 12 hours, Rinse aid indicator light and lens, Electronic fault/Diagnostic indicator

Power Requirements: 110-120 V, 60Hz, 10.6 amp circuit

Accessories: Knife clip, Kickstrip



Double DishDrawer™ Dishwasher

DD24DCB7
Black
Recessed handle

Dimensions: H 32 5/16" – 34 5/8" x W 23 9/16" x D 22 15/16"

Energy Rating: ENERGY STAR rated CEE tier 2
Water Usage: Uses as little as 2 gallons of water per drawer

Performance: SmartDrive™ intelligent technology, Intelligent load sensing for optimum performance, Flow through detergent dispenser, Quiet operation

Capacity and Loading: 7 Place settings per drawer, Flexible racking system, Fold down and pitch adjustable tines, Adjustable racks and cup racks, Accommodates long stemmed wine glasses, Accommodates plates up to 11 1/2"

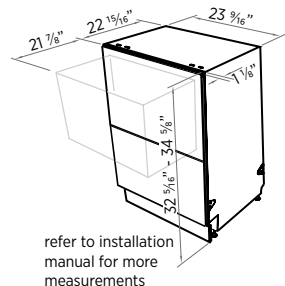
Wash Programs: 9 wash programs, Genuine half load wash option, Eco options, Permanent memory of the last cycle used

Safety: Three stage total flood protection

Controls: Easy to use primary and secondary concealed control panels with single touch programming, Key lock, Child lock, End of cycle beeps, One button start, Energy saving delay start option up to 12 hours, Rinse aid indicator light and lens, Electronic fault/Diagnostic indicator

Power Requirements: 110-120 V, 60Hz, 10.6 amp circuit

Accessories: Knife clip, Kickstrip





Double DishDrawer™ Dishwasher

DD24DCW7

White

Recessed handle

Dimensions: H 32 5/16" – 34 5/8" x W 23 3/16" x D 22 15/16"

Energy Rating: ENERGY STAR rated CEE tier 2

Water Usage: Uses as little as 2 gallons of water per drawer

Performance: SmartDrive™ intelligent technology, Intelligent load sensing for optimum performance, Flow through detergent dispenser, Quiet operation

Capacity and Loading: 7 Place settings per drawer, Flexible racking system, Fold down and pitch adjustable tines, Adjustable racks and cup racks, Accommodates long stemmed wine glasses, Accommodates plates up to 11 1/2"

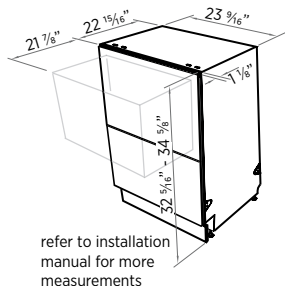
Wash Programs: 9 wash programs, Genuine half load wash option, Eco options, Permanent memory of the last cycle used

Safety: Three stage total flood protection

Controls: Easy to use primary and secondary concealed control panels with single touch programming, Key lock, Child lock, End of cycle beeps, One button start, Energy saving delay start option up to 12 hours, Rinse aid indicator light and lens, Electronic fault/Diagnostic indicator

Power Requirements: 110-120 V, 60Hz, 10.6 amp circuit

Accessories: Knife clip, Kickstrip



Single DishDrawer™ Dishwasher

DD24SDFX7

EZKleen Stainless Steel

Designer handle

Dimensions: H 16 1/8" x W 23 3/16" x D 22 1/2"

Energy Rating: ENERGY STAR rated CEE tier 1

Water Usage: Uses as little as 2 gallons of water

Performance: SmartDrive™ intelligent technology, Intelligent load sensing for optimum performance, Flow through detergent dispenser, Quiet operation

Capacity and Loading: 7 Place settings, Flexible racking system, Fold down and pitch adjustable tines, Adjustable racks and cup racks, Accommodates long stemmed wine glasses, Accommodates plates up to 11 1/2"

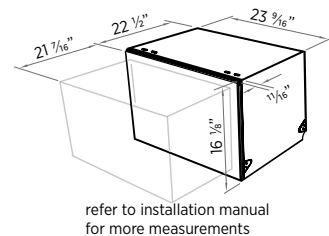
Wash Programs: 9 wash programs, Eco options, Permanent memory of the last cycle used

Safety: Three stage total flood protection

Controls: Easy to use primary and secondary concealed control panel with single touch programming, Key lock, Child lock, End of cycle beeps, One button start, Energy saving delay start option up to 12 hours, Rinse aid indicator light and lens, Electronic fault/Diagnostic indicator

Power Requirements: 110-120 V, 60Hz, 5.8 amp circuit

Accessories: Knife clip





Single DishDrawer™ Dishwasher

DD24SI7

Integrated (apply your own cabinetry facade)
Designer handle shown (apply your own handle)

Dimensions: H 16 1/8" x W 23 3/16" x D 22 1/2"

Energy Rating: ENERGY STAR rated CEE tier 1
Water Usage: Uses as little as 2 gallons of water

Performance: SmartDrive™ intelligent technology, Intelligent load sensing for optimum performance, Flow through detergent dispenser, Quiet operation

Capacity and Loading: 7 Place settings, Flexible racking system, Fold down and pitch adjustable tines, Adjustable racks and cup racks, Accommodates long stemmed wine glasses, Accommodates plates up to 11 1/2"

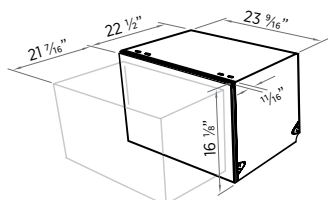
Wash Programs: 9 wash programs, Eco options, Permanent memory of the last cycle used

Safety: Three stage total flood protection

Controls: Wireless control badge, Easy to use primary and secondary concealed control panel with single touch programming, Key lock, Child lock, End of cycle beeps, One button start, Energy saving delay start option up to 12 hours, Rinse aid indicator light and lens, Electronic fault/Diagnostic indicator

Power Requirements: 110-120 V, 60Hz, 5.8 amp circuit

Accessories: Knife clip



refer to installation manual
for more measurements



Single DishDrawer™ Dishwasher

DD24SCX7

EZKleen Stainless Steel
Recessed handle

Dimensions: H 16 1/8" x W 23 3/16" x D 22 15/16"

Energy Rating: ENERGY STAR rated CEE tier 1
Water Usage: Uses as little as 2 gallons of water

Performance: SmartDrive™ intelligent technology, Intelligent load sensing for optimum performance, Flow through detergent dispenser, Quiet operation

Capacity and Loading: 7 Place settings, Flexible racking system, Fold down and pitch adjustable tines, Adjustable racks and cup racks, Accommodates long stemmed wine glasses, Accommodates plates up to 11 1/2"

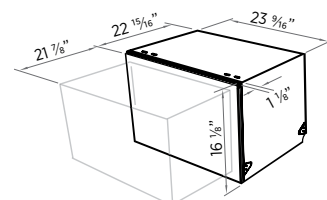
Wash Programs: 9 wash programs, Eco options, Permanent memory of the last cycle used

Safety: Three stage total flood protection

Controls: Easy to use primary and secondary concealed control panel with single touch programming, Key lock, Child lock, End of cycle beeps, One button start, Energy saving delay start option up to 12 hours, Rinse aid indicator light and lens, Electronic fault/Diagnostic indicator

Power Requirements: 110-120 V, 60Hz, 5.8 amp circuit

Accessories: Knife clip



refer to installation manual
for more measurements



Single DishDrawer™ Dishwasher

DD24SCB7
Black
Recessed handle

Dimensions: H 16 1/8" x W 23 5/16" x D 22 15/16"

Energy Rating: ENERGY STAR rated CEE tier 1
Water Usage: Uses as little as 2 gallons of water

Performance: SmartDrive™ intelligent technology, Intelligent load sensing for optimum performance, Flow through detergent dispenser, Quiet operation

Capacity and Loading: 7 Place settings, Flexible racking system, Fold down and pitch adjustable tines, Adjustable racks and cup racks, Accommodates long stemmed wine glasses, Accommodates plates up to 11 1/2"

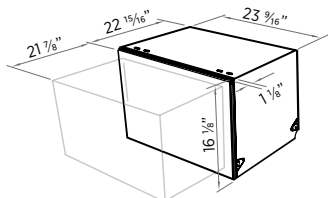
Wash Programs: 9 wash programs, Eco option, Permanent memory of the last cycle used

Safety: Three stage total flood protection

Controls: Easy to use primary and secondary concealed control panel with single touch programming, Key lock, Child lock, End of cycle beeps, One button start, Energy saving delay start option up to 12 hours, Rinse aid indicator light and lens, Electronic fault/Diagnostic indicator

Power Requirements: 110-120 V, 60 Hz, 5.8 amp circuit

Accessories: Knife clip



refer to installation manual for more measurements



Single DishDrawer™ Dishwasher

DD24SCW7
White
Recessed handle

Dimensions: H 16 1/8" x W 23 5/16" x D 22 15/16"

Energy Rating: ENERGY STAR rated CEE tier 1
Water Usage: Uses as little as 2 gallons of water

Performance: SmartDrive™ intelligent technology, Intelligent load sensing for optimum performance, Flow through detergent dispenser, Quiet operation

Capacity and Loading: 7 Place settings, Flexible racking system, Fold down and pitch adjustable tines, Adjustable racks and cup racks, Accommodates long stemmed wine glasses, Accommodates plates up to 11 1/2"

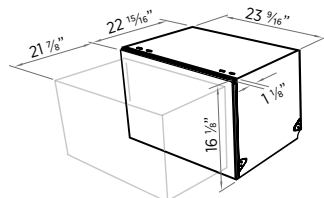
Wash Programs: 9 wash programs, Eco option, Permanent memory of the last cycle used

Safety: Three stage total flood protection

Controls: Easy to use primary and secondary concealed control panel with single touch programming, Key lock, Child lock, End of cycle beeps, One button start, Energy saving delay start option up to 12 hours, Rinse aid indicator light and lens, Electronic fault/Diagnostic indicator

Power Requirements: 110-120 V, 60 Hz, 5.8 amp circuit

Accessories: Knife clip



refer to installation manual for more measurements





Customer Care

Call 24 hours a day, 7 days a week

Fisher & Paykel has a 24 hour Customer Care Center that allows you to speak to a real person about any questions you may have about your products.

Our Customer Care Representatives can offer advice on which appliances will suit your needs, and provide extensive product knowledge on how to use your current Fisher & Paykel and DCS products.

We can also refer you to a qualified service technician to install selected products for you and advise you where your nearest Fisher & Paykel Dealer is located. Nobody is better qualified to install, service and repair your Fisher & Paykel and DCS household appliances than our own network of specially trained service technicians.

Fisher & Paykel Factory Service

In certain markets, Fisher & Paykel have dedicated factory trained and supported service technicians available to carry out service, fully supported, managed and employed by Fisher & Paykel Appliances.

Should you require service on your product, our Customer Care Representatives can arrange for our Factory Service Technicians to visit or refer you to an authorized service technician in your area.

The Fisher & Paykel Customer Care Center operates 24 hours a day, 7 days a week.

Toll Free 1.888.936.7872

www.fisherpaykel.com/customercare

www.fisherpaykel.ca/customercare







Fisher & Paykel

www.fisherpaykel.com — www.fisherpaykel.ca

FPBR0417 December 2011

Copyright © Fisher & Paykel 2011. All Rights Reserved. The product dimensions and specifications in this brochure apply to the specific products and models described at the date of issue. Under our policy of continuous product improvement, these dimensions and specifications may change at any time. You should therefore check with your dealer or Fisher & Paykel's Customer Care Center to ensure this brochure correctly describes the products currently available.

Important Notice of Disclaimer: Our brochure contains information on a wide subject of products which we manufacture and/or sell internationally. Some particular products, models or sizes which are detailed in this brochure may not be available for sale and purchase in your area or country, if available the product may have different options to those depicted in the brochure. Before agreeing to purchase a particular product by reference to this brochure please check its availability and accuracy of its description.

This brochure has been printed using world's best practice ISO 14001 Environment Management System. Printed on FSC Mixed Sources paper and with soy ink. This Brochure represents a green choice by Fisher & Paykel to participate in the growing movement toward social responsibility.
